

- Blackwater River SOA-Clapper Addition
- WFFD (~20 ac. of ~27 ac.)
- FWLT (~7 ac. of ~27 ac.)
- Forever Wild Tracts
- DCNR Acreage
- Lillian Swamp Blackwater Additions (Appraised)
- Special Opportunity Areas

USGS The National Map, National Boundaries Dataset, 3DEP Elevation Program, Geographic Names Information System, National Hydrography Dataset, National Land Cover Database, National Structures Dataset, and National Transportation Dataset; USGS Global Ecosystems; U.S. Census Bureau TIGER/Line data; USFS Road Data; Natural Earth Data; U.S. Department of State Humanitarian Information Unit; and NOAA National Centers for Environmental Information, U.S. Coastal Relief Model. Data refreshed April, 2023. 1:24,000

Alabama Department of Conservation and Natural Resources
Forever Wild Nomination
BLACKWATER RIVER SOA-CLAPPER ADDITION

~27 acres

Baldwin County

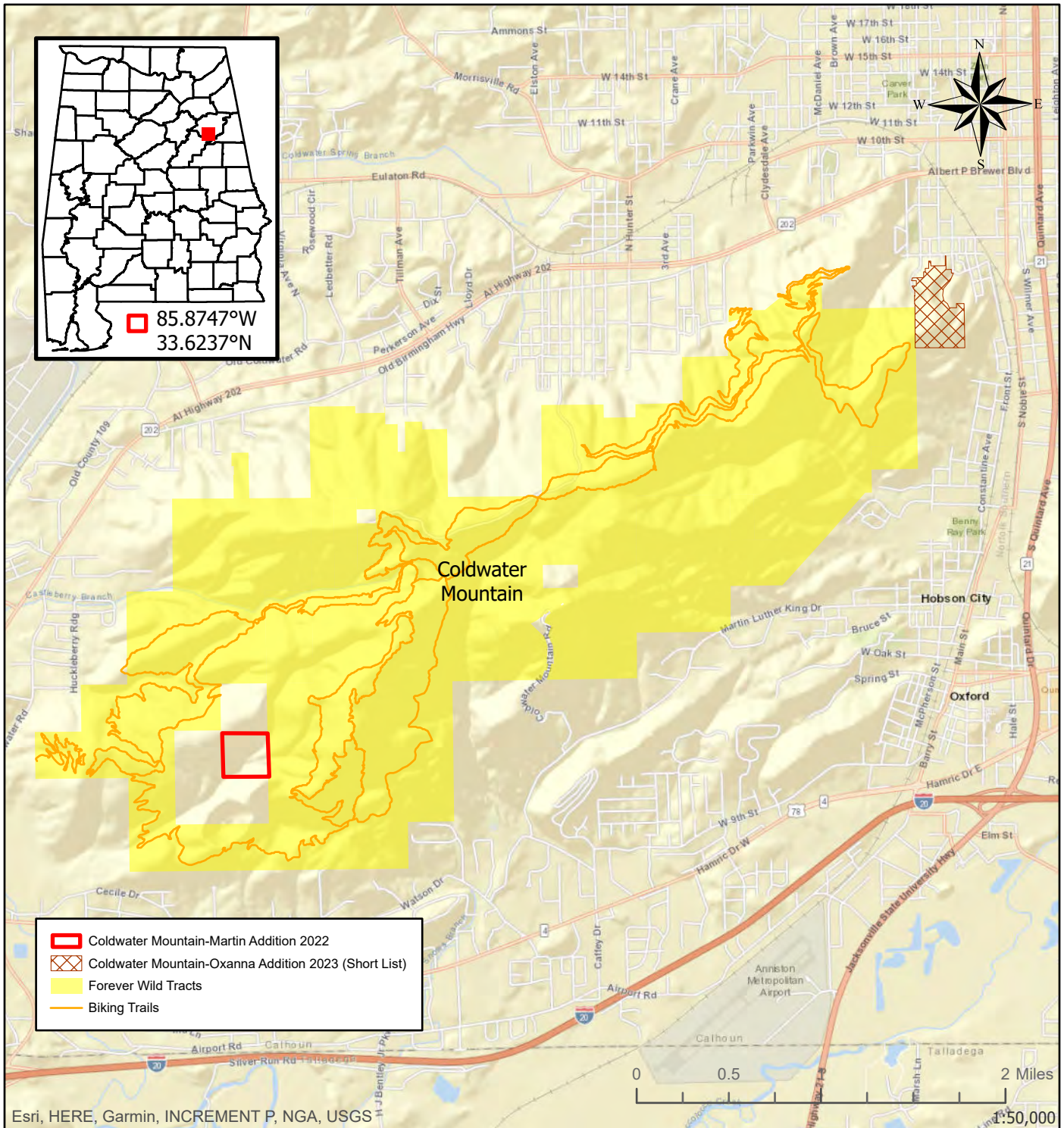
T07S R06E

Lillian USGS Quadrangle



This map is for general overview information purposes only and, accordingly, should not be utilized or otherwise relied upon for any purpose. The Alabama Department of Conservation and Natural Resources and its affiliates assume no responsibility for any inaccuracies as to boundary lines, parcel ownership or other information contained within or depicted on the map.

Jo.Lewis 7/19/2023



- Coldwater Mountain-Martin Addition 2022
- Coldwater Mountain-Oxanna Addition 2023 (Short List)
- Forever Wild Tracts
- Biking Trails

Alabama Department of Conservation and Natural Resources
Forever Wild Nomination
COLDWATER MOUNTAIN-MARTIN ADDITION 2022

~37 acres

Calhoun County

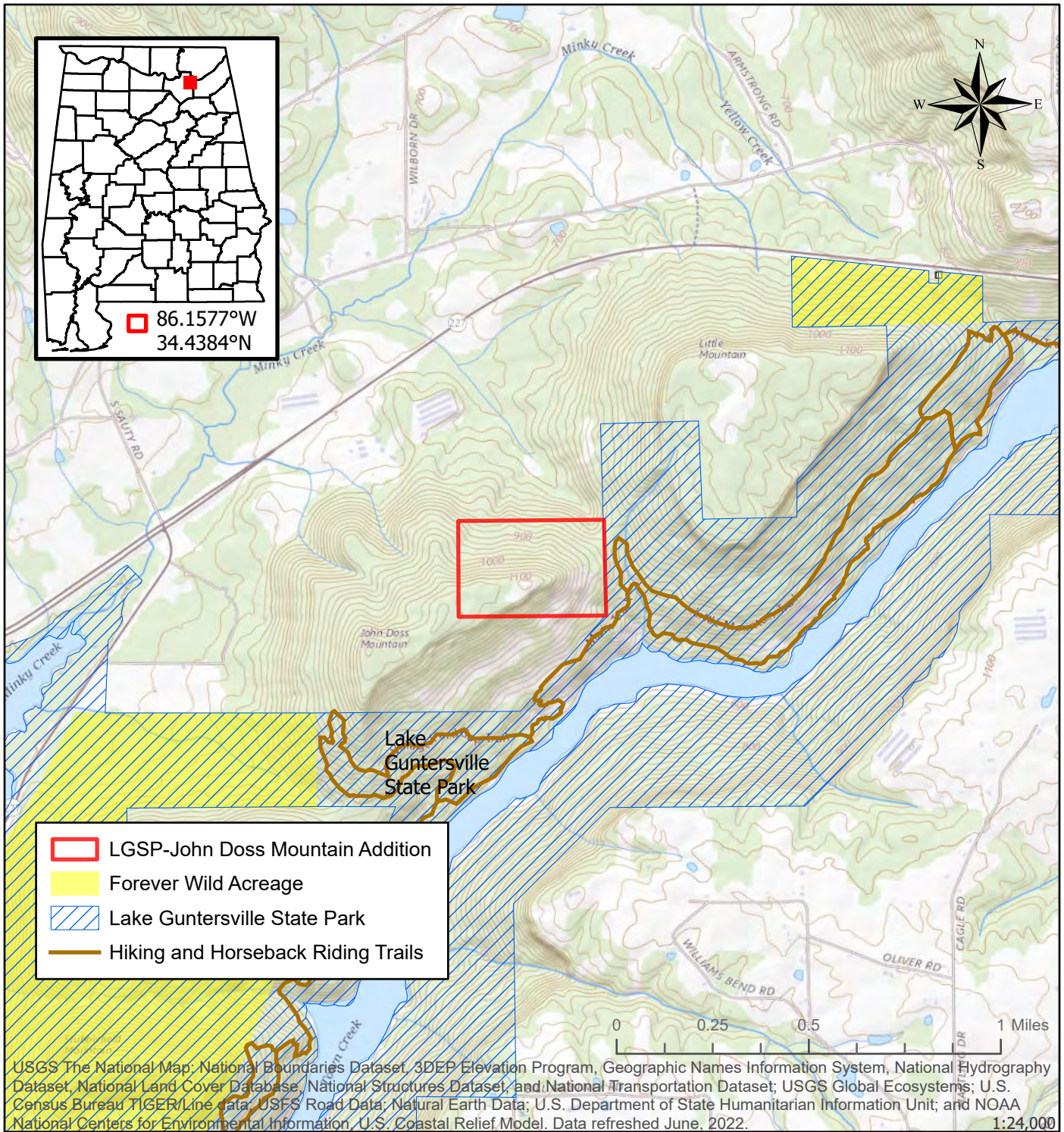
T16S R07E

Mumford USGS Quadrangle



This map is for general overview information purposes only and, accordingly, should not be utilized or otherwise relied upon for any purpose. The Alabama Department of Conservation and Natural Resources and its affiliates assume no responsibility for any inaccuracies as to boundary lines, parcel ownership or other information contained within or depicted on the map.

Jo.Lewis 4/13/2023



USGS The National Map; National Boundaries Dataset, 3DEP Elevation Program, Geographic Names Information System, National Hydrography Dataset, National Land Cover Database, National Structures Dataset, and National Transportation Dataset; USGS Global Ecosystems; U.S. Census Bureau TIGER/Line data; USFS Road Data; Natural Earth Data; U.S. Department of State Humanitarian Information Unit; and NOAA National Centers for Environmental Information, U.S. Coastal Relief Model. Data refreshed June, 2022. 1:24,000

**Alabama Department of Conservation and Natural Resources
Forever Wild Nomination**

LAKE GUNTERSVILLE SP-JOHN DOSS MOUNTAIN ADDITION

~60 acres

Marshall County

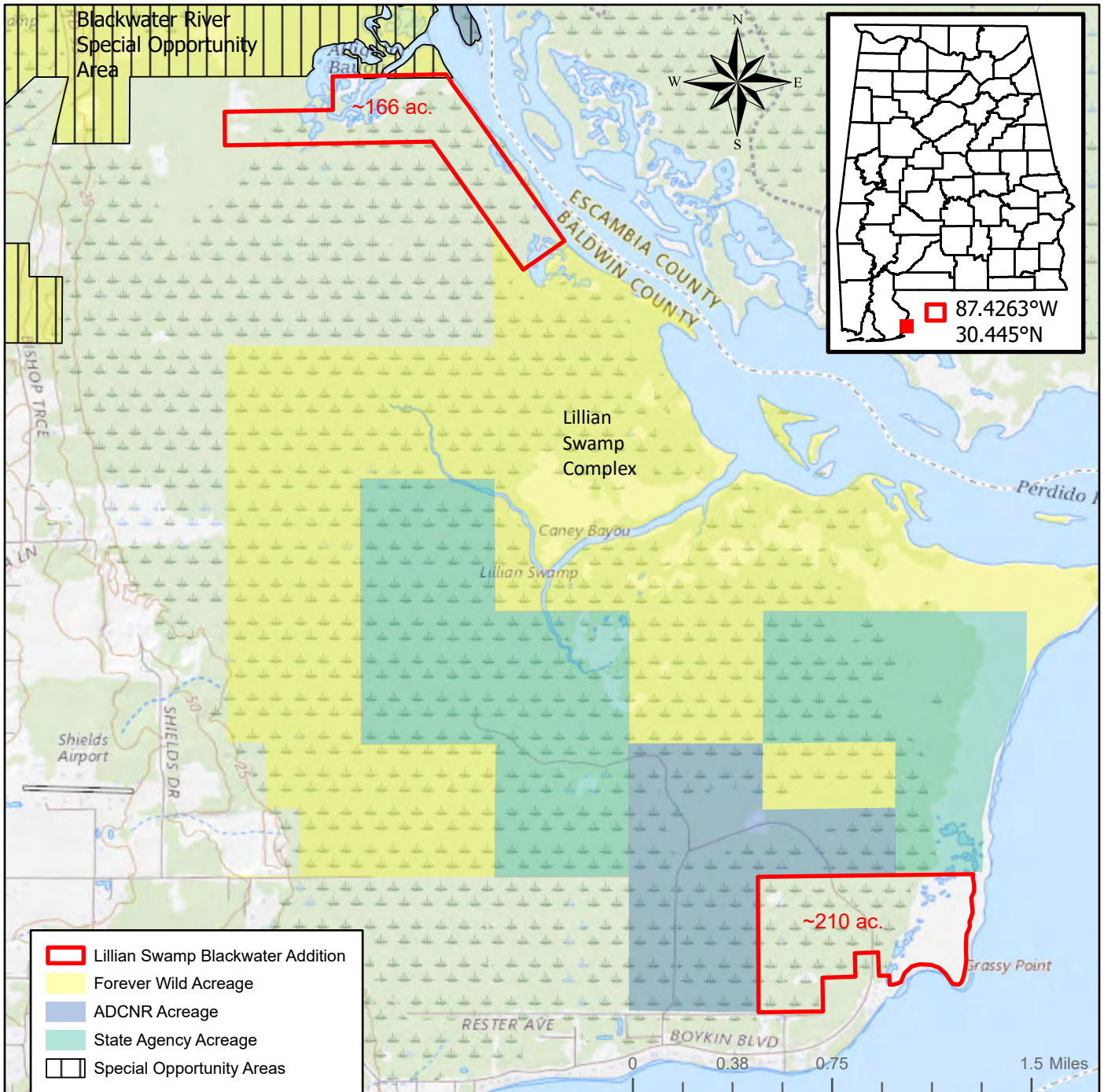
T07S R05E

Columbus City USGS Quadrangle



This map is for general overview information purposes only and, accordingly, should not be utilized or otherwise relied upon for any purpose. The Alabama Department of Conservation and Natural Resources and its affiliates assume no responsibility for any inaccuracies as to boundary lines, parcel ownership or other information contained within or depicted on the map.

Jo.Lewis 3/29/2023



USGS The National Map; National Boundaries Dataset, 3DEP Elevation Program, Geographic Names Information System, National Hydrography Dataset, National Land Cover Database, National Structures Dataset, and National Transportation Dataset; USGS Global Ecosystems; U.S. Census Bureau TIGER/Line data; USFS Road Data; Natural Earth Data; U.S. Department of State Humanitarian Information Unit; and NOAA National Centers for Environmental Information, U.S. Coastal Relief Model. Data refreshed April, 2023. 1:36,000

Alabama Department of Conservation and Natural Resources
Forever Wild Nomination
LILLIAN SWAMP BLACKWATER ADDITIONS

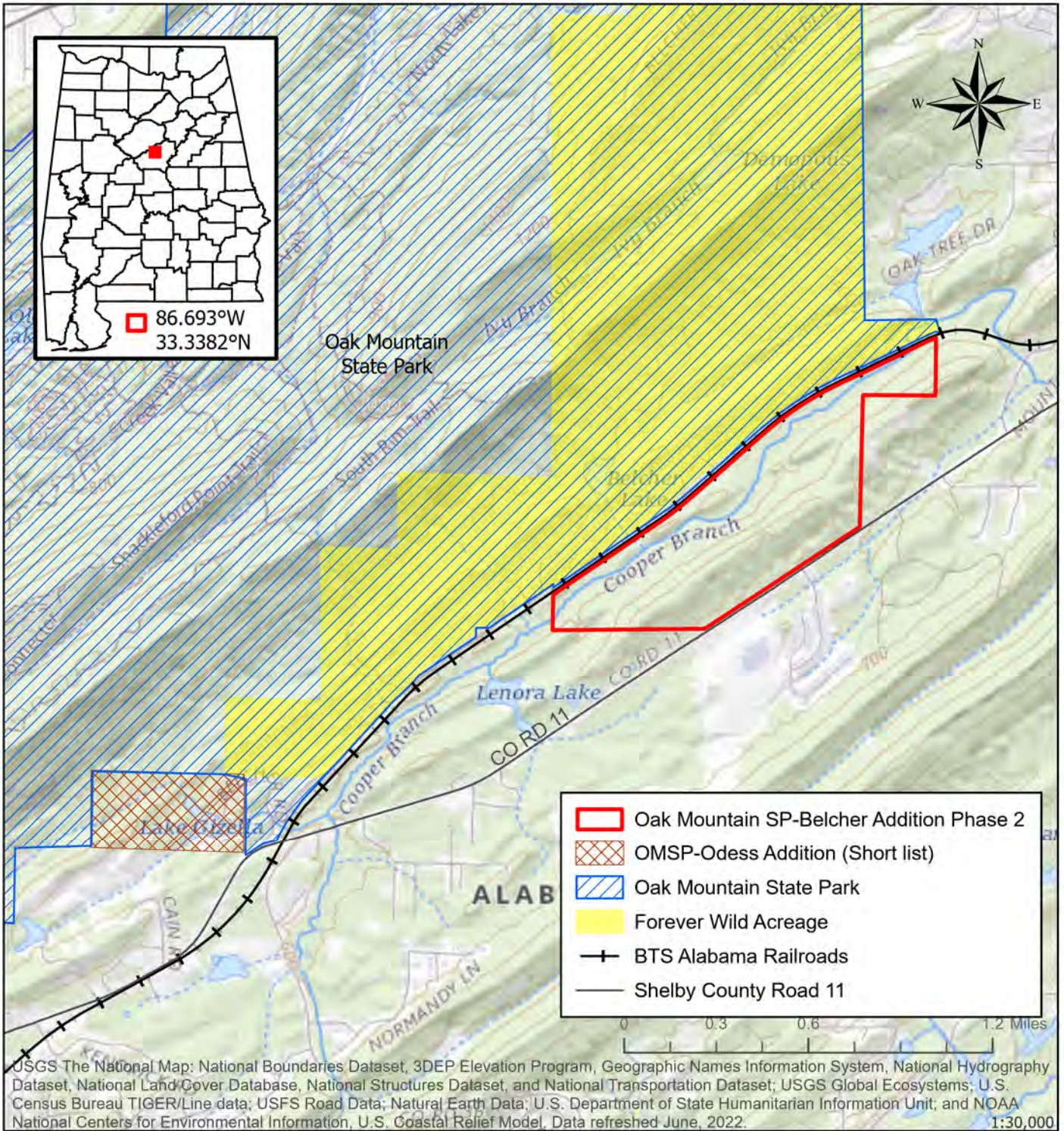
~376 acres

Baldwin County T07S R06E
 Lillian USGS Quadrangle



This map is for general overview information purposes only and, accordingly, should not be utilized or otherwise relied upon for any purpose. The Alabama Department of Conservation and Natural Resources and its affiliates assume no responsibility for any inaccuracies as to boundary lines, parcel ownership or other information contained within or depicted on the map.

Jo.Lewis 7/24/2023



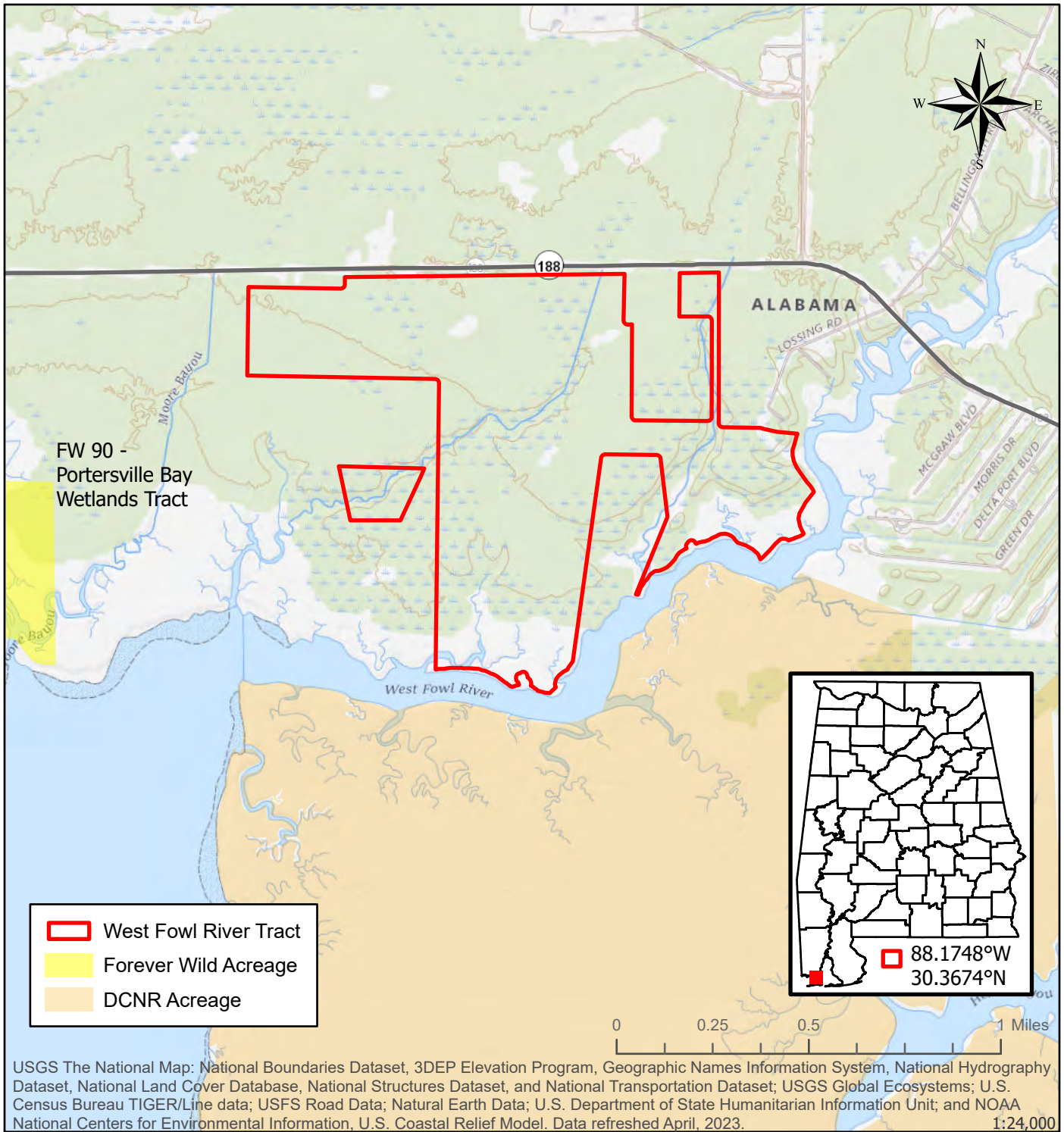
USGS The National Map: National Boundaries Dataset, 3DEP Elevation Program, Geographic Names Information System, National Hydrography Dataset, National Land Cover Database, National Structures Dataset, and National Transportation Dataset; USGS Global Ecosystems; U.S. Census Bureau TIGER/Line data; USFS Road Data; Natural Earth Data; U.S. Department of State Humanitarian Information Unit; and NOAA National Centers for Environmental Information, U.S. Coastal Relief Model, Data refreshed June, 2022. 1:30,000

Alabama Department of Conservation and Natural Resources
Forever Wild Nomination
OAK MTN. STATE PARK-BELCHER ADDITION PHASE 2
 ~277 acres
 Shelby County T19S R01W
 Chelsea USGS Quadrangle



This map is for general overview information purposes only and, accordingly, should not be utilized or otherwise relied upon for any purpose. The Alabama Department of Conservation and Natural Resources and its affiliates assume no responsibility for any inaccuracies as to boundary lines, parcel ownership or other information contained within or depicted on the map.

Jo.Lewis 7/20/2022



USGS The National Map: National Boundaries Dataset, 3DEP Elevation Program, Geographic Names Information System, National Hydrography Dataset, National Land Cover Database, National Structures Dataset, and National Transportation Dataset; USGS Global Ecosystems; U.S. Census Bureau TIGER/Line data; USFS Road Data; Natural Earth Data; U.S. Department of State Humanitarian Information Unit; and NOAA National Centers for Environmental Information, U.S. Coastal Relief Model. Data refreshed April, 2023. 1:24,000

Alabama Department of Conservation and Natural Resources
Forever Wild Nomination
WEST FOWL RIVER TRACT

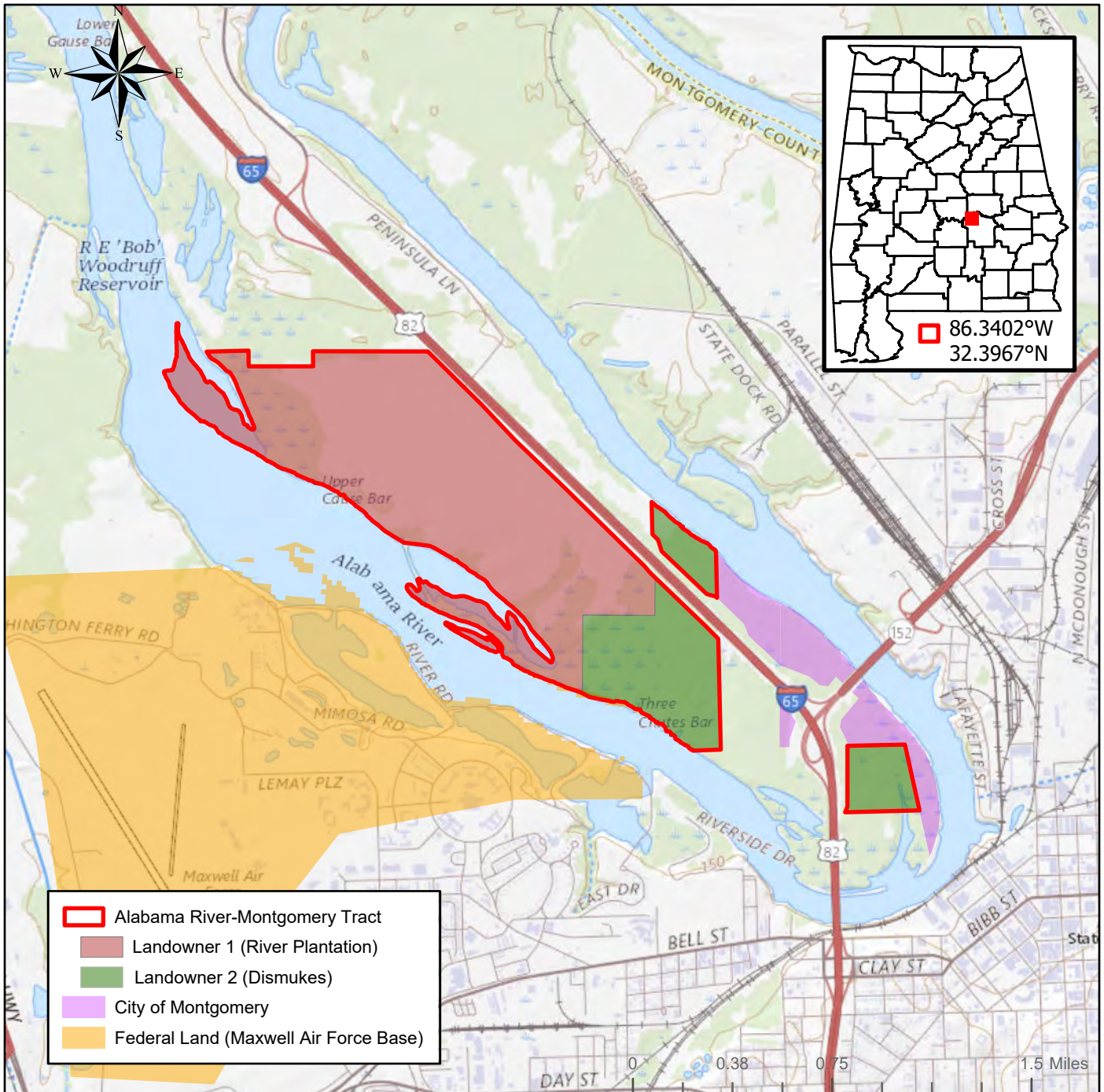
~525 acres

Mobile County T08S R02W
 Coden and Heron Bay USGS Quadrangle



This map is for general overview information purposes only and, accordingly, should not be utilized or otherwise relied upon for any purpose. The Alabama Department of Conservation and Natural Resources and its affiliates assume no responsibility for any inaccuracies as to boundary lines, parcel ownership or other information contained within or depicted on the map.

Jo.Lewis 4/24/2023



USGS The National Map: National Boundaries Dataset, 3DEP Elevation Program, Geographic Names Information System, National Hydrography Dataset, National Land Cover Database, National Structures Dataset, and National Transportation Dataset; USGS Global Ecosystems; U.S. Census Bureau TIGER/Line data; USFS Road Data; Natural Earth Data; U.S. Department of State Humanitarian Information Unit; and NOAA National Centers for Environmental Information, U.S. Coastal Relief Model. Data refreshed April, 2023. 1:36,000

Alabama Department of Conservation and Natural Resources
Forever Wild Nomination
ALABAMA RIVER-MONTGOMERY TRACT

~797 acres

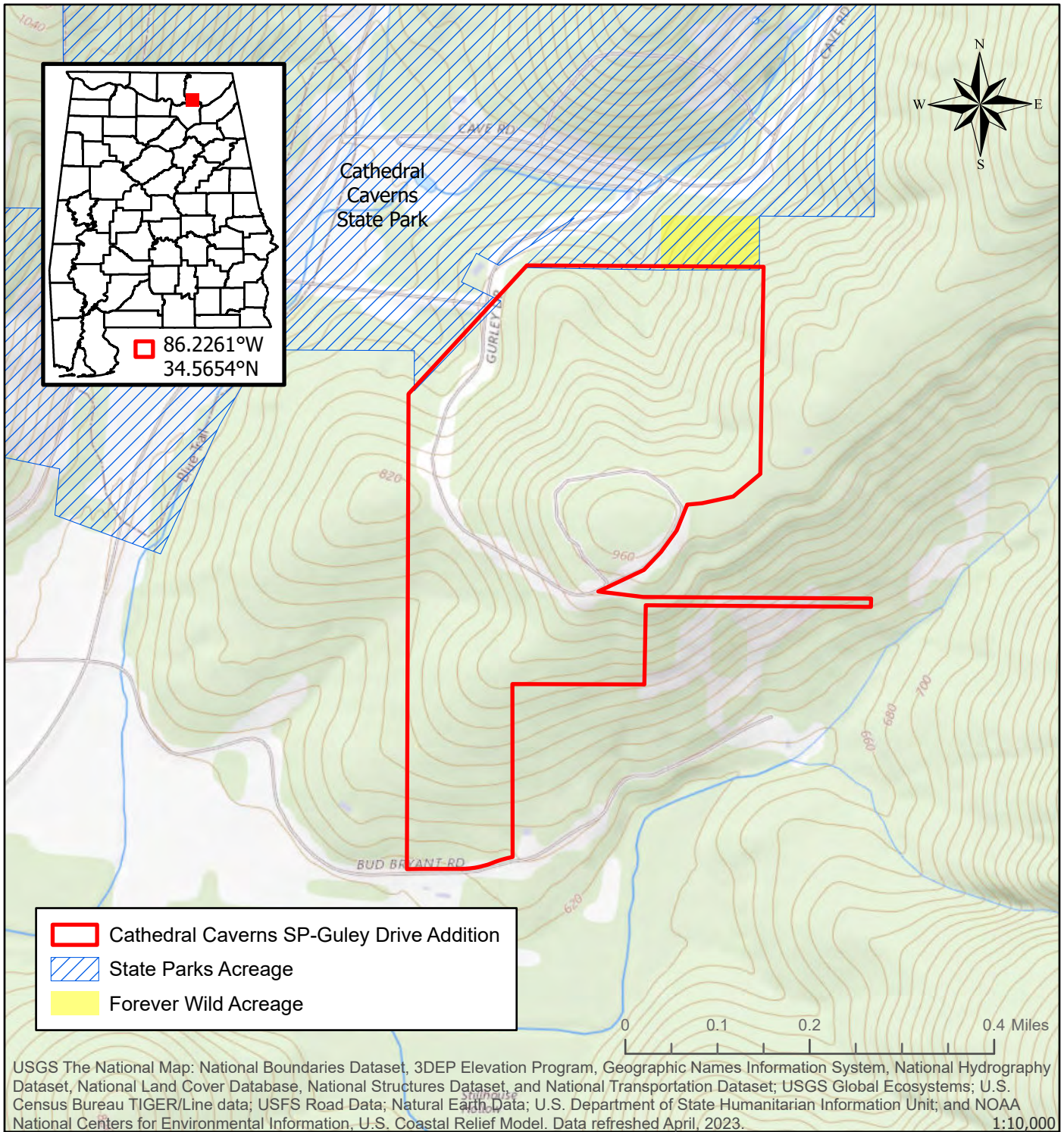
Montgomery County
 Montgomery North USGS Quadrangle

T16N R17E and T17N R17E



This map is for general overview information purposes only and, accordingly, should not be utilized or otherwise relied upon for any purpose. The Alabama Department of Conservation and Natural Resources and its affiliates assume no responsibility for any inaccuracies as to boundary lines, parcel ownership or other information contained within or depicted on the map.

Jo.Lewis 4/21/2023



USGS The National Map: National Boundaries Dataset, 3DEP Elevation Program, Geographic Names Information System, National Hydrography Dataset, National Land Cover Database, National Structures Dataset, and National Transportation Dataset; USGS Global Ecosystems; U.S. Census Bureau TIGER/Line data; USFS Road Data; Natural Earth Data; U.S. Department of State Humanitarian Information Unit; and NOAA National Centers for Environmental Information, U.S. Coastal Relief Model. Data refreshed April, 2023. 1:10,000

**Alabama Department of Conservation and Natural Resources
Forever Wild Nomination**

CATHEDRAL CAVERNS SP-GURLEY DRIVE ADDITION

~109 acres

Marshall County

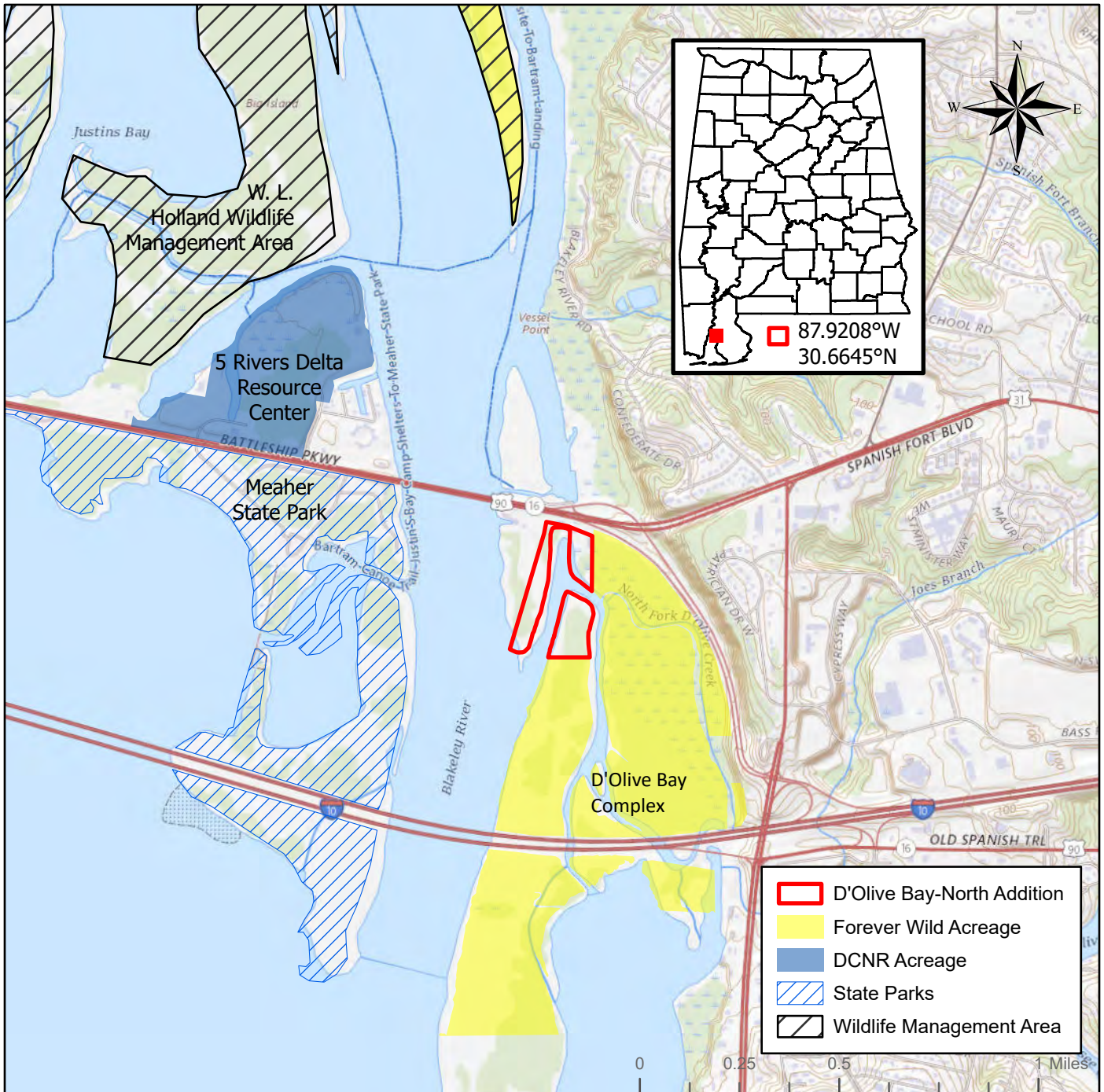
T05S R04E

Swarengin USGS Quadrangle



This map is for general overview information purposes only and, accordingly, should not be utilized or otherwise relied upon for any purpose. The Alabama Department of Conservation and Natural Resources and its affiliates assume no responsibility for any inaccuracies as to boundary lines, parcel ownership or other information contained within or depicted on the map.

Jo.Lewis 7/17/2023



USGS The National Map: National Boundaries Dataset, 3DEP Elevation Program, Geographic Names Information System, National Hydrography Dataset, National Land Cover Database, National Structures Dataset, and National Transportation Dataset; USGS Global Ecosystems; U.S. Census Bureau TIGER/Line data; USFS Road Data; Natural Earth Data; U.S. Department of State Humanitarian Information Unit; and NOAA National Centers for Environmental Information, U.S. Coastal Relief Model. Data refreshed June, 2022. 1:24,000

Alabama Department of Conservation and Natural Resources
Forever Wild Nomination
D'OLIVE BAY-NORTH ADDITION

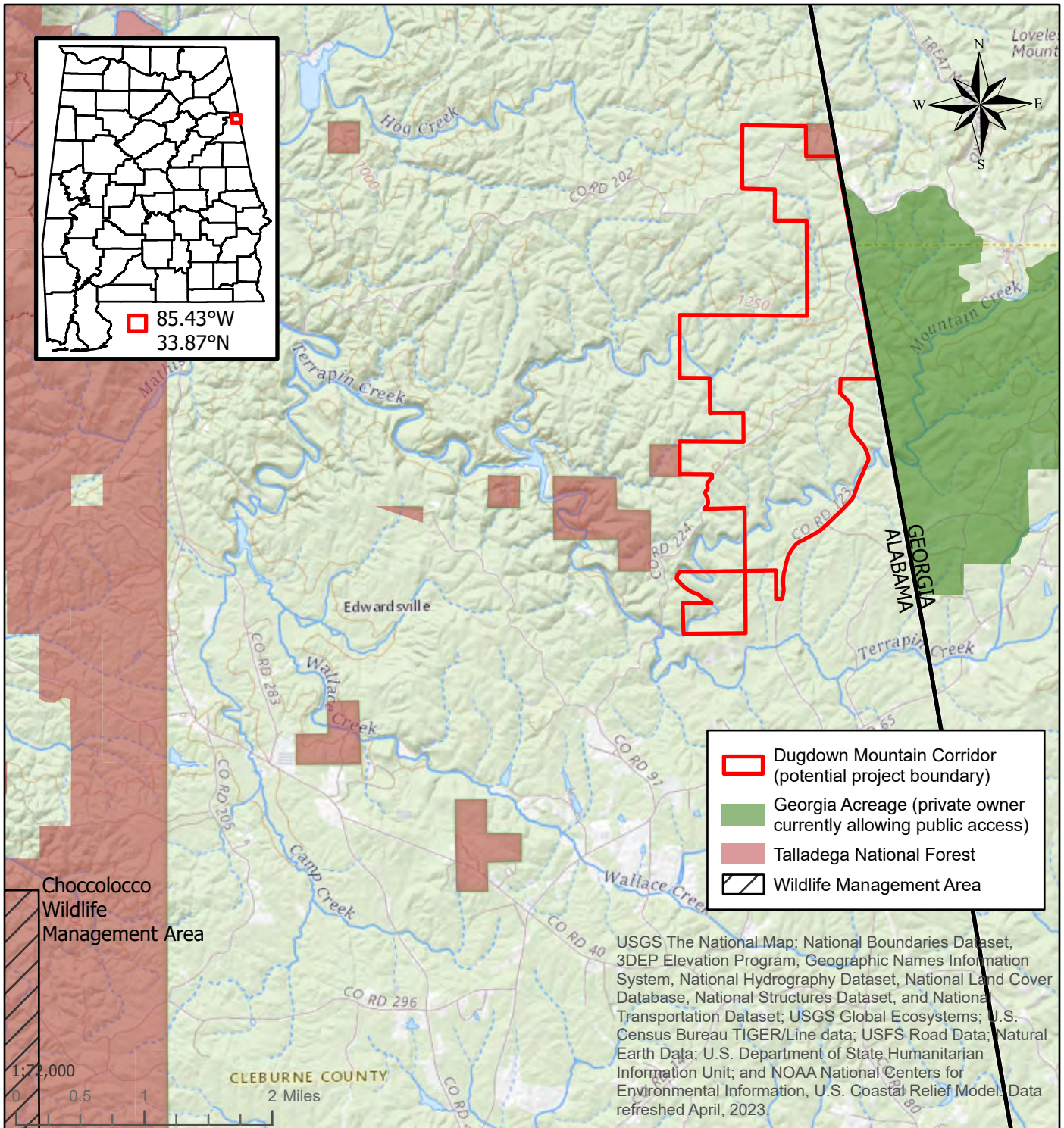
~23 acres

Baldwin County T04S R02E
 Bridgehead USGS Quadrangle



This map is for general overview information purposes only and, accordingly, should not be utilized or otherwise relied upon for any purpose. The Alabama Department of Conservation and Natural Resources and its affiliates assume no responsibility for any inaccuracies as to boundary lines, parcel ownership or other information contained within or depicted on the map.

Jo.Lewis 10/18/2022



- Dugdown Mountain Corridor (potential project boundary)
- Georgia Acreage (private owner currently allowing public access)
- Talladega National Forest
- Wildlife Management Area

USGS The National Map: National Boundaries Dataset, 3DEP Elevation Program, Geographic Names Information System, National Hydrography Dataset, National Land Cover Database, National Structures Dataset, and National Transportation Dataset; USGS Global Ecosystems; U.S. Census Bureau TIGER/Line data; USFS Road Data; Natural Earth Data; U.S. Department of State Humanitarian Information Unit; and NOAA National Centers for Environmental Information, U.S. Coastal Relief Model. Data refreshed April, 2023.

Alabama Department of Conservation and Natural Resources
Forever Wild Nomination
DUGDOWN MOUNTAIN CORRIDOR

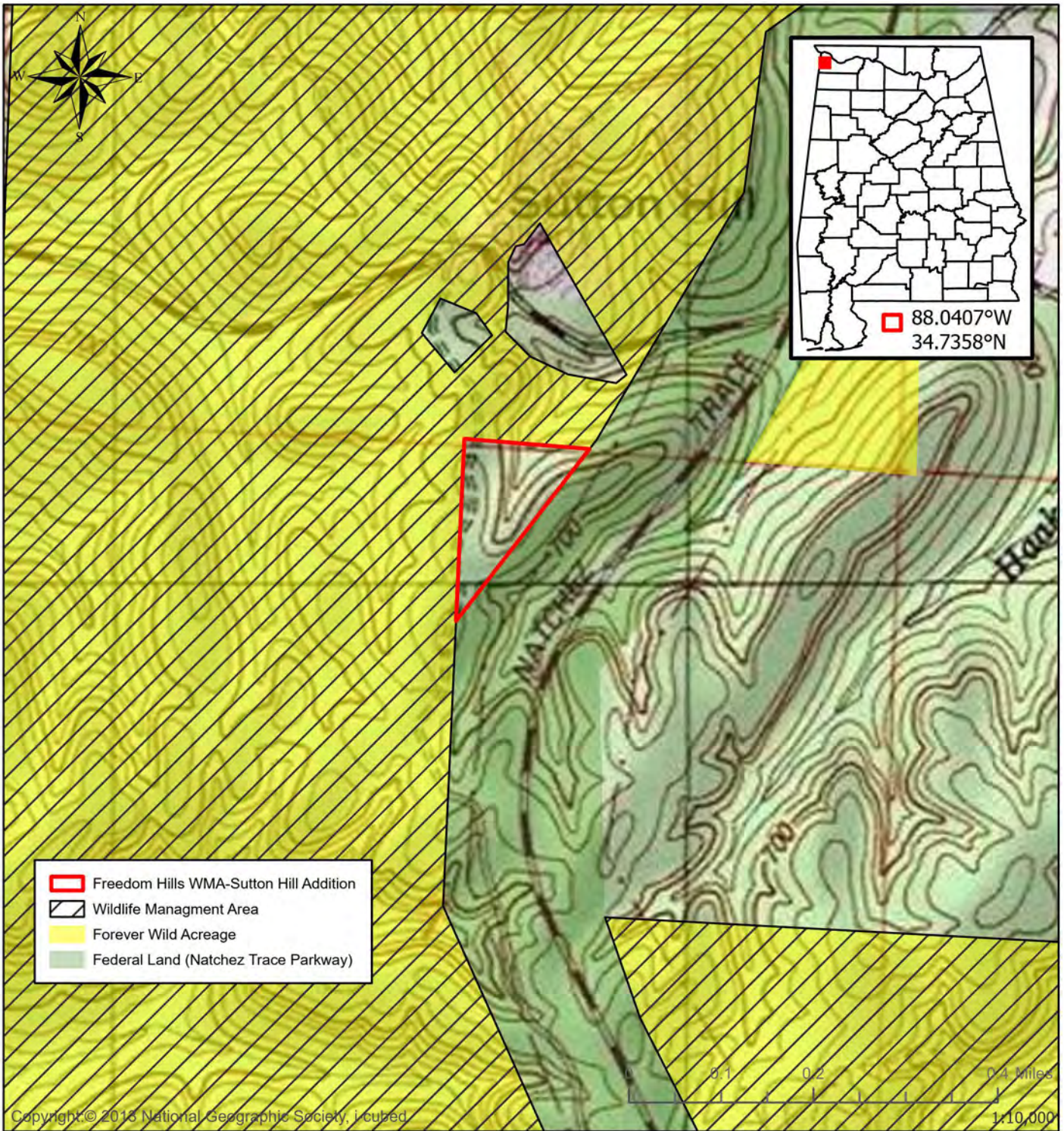
~1,984 acres

Cleburne County T13S R12E
 Borden Springs and Oak Level USGS Quadrangles



This map is for general overview information purposes only and, accordingly, should not be utilized or otherwise relied upon for any purpose. The Alabama Department of Conservation and Natural Resources and its affiliates assume no responsibility for any inaccuracies as to boundary lines, parcel ownership or other information contained within or depicted on the map.

Jo.Lewis 4/7/2023



Copyright © 2018 National Geographic Society, Inc.

Alabama Department of Conservation and Natural Resources
Forever Wild Nomination
FREEDOM HILLS WMA-SUTTON HILL ADDITION

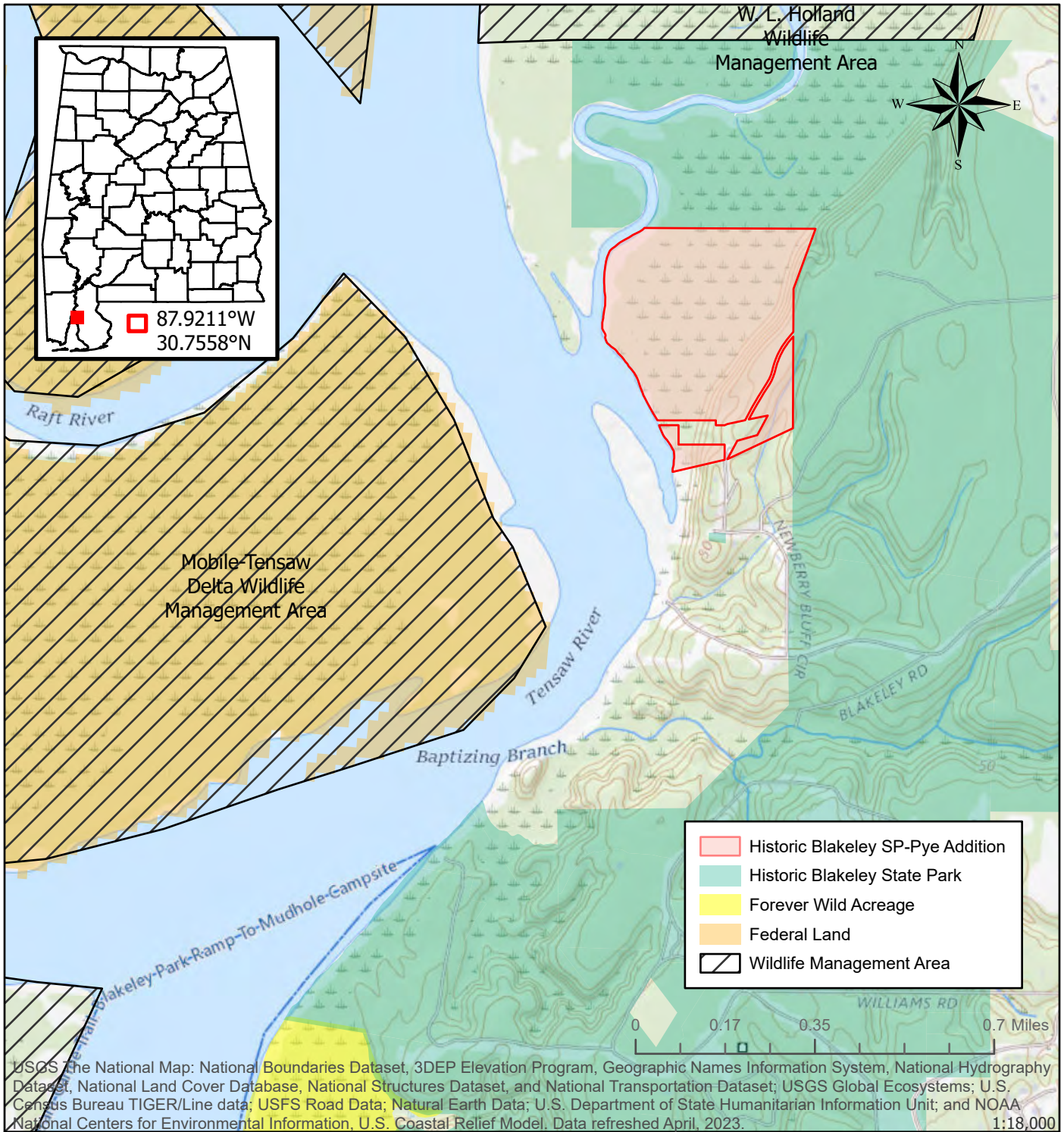
~17 acres

Colbert County T04S R14W
 Bishop USGS Quadrangle



This map is for general overview information purposes only and, accordingly, should not be utilized or otherwise relied upon for any purpose. The Alabama Department of Conservation and Natural Resources and its affiliates assume no responsibility for any inaccuracies as to boundary lines, parcel ownership or other information contained within or depicted on the map.

Ashley.Peter@alabama.gov 8/21/2023



USGS The National Map: National Boundaries Dataset, 3DEP Elevation Program, Geographic Names Information System, National Hydrography Dataset, National Land Cover Database, National Structures Dataset, and National Transportation Dataset; USGS Global Ecosystems; U.S. Census Bureau TIGER/Line data; USFS Road Data; Natural Earth Data; U.S. Department of State Humanitarian Information Unit; and NOAA National Centers for Environmental Information, U.S. Coastal Relief Model. Data refreshed April, 2023. 1:18,000

Alabama Department of Conservation and Natural Resources
Forever Wild Nomination
HISTORIC BLAKELEY SP-PYE ADDITION

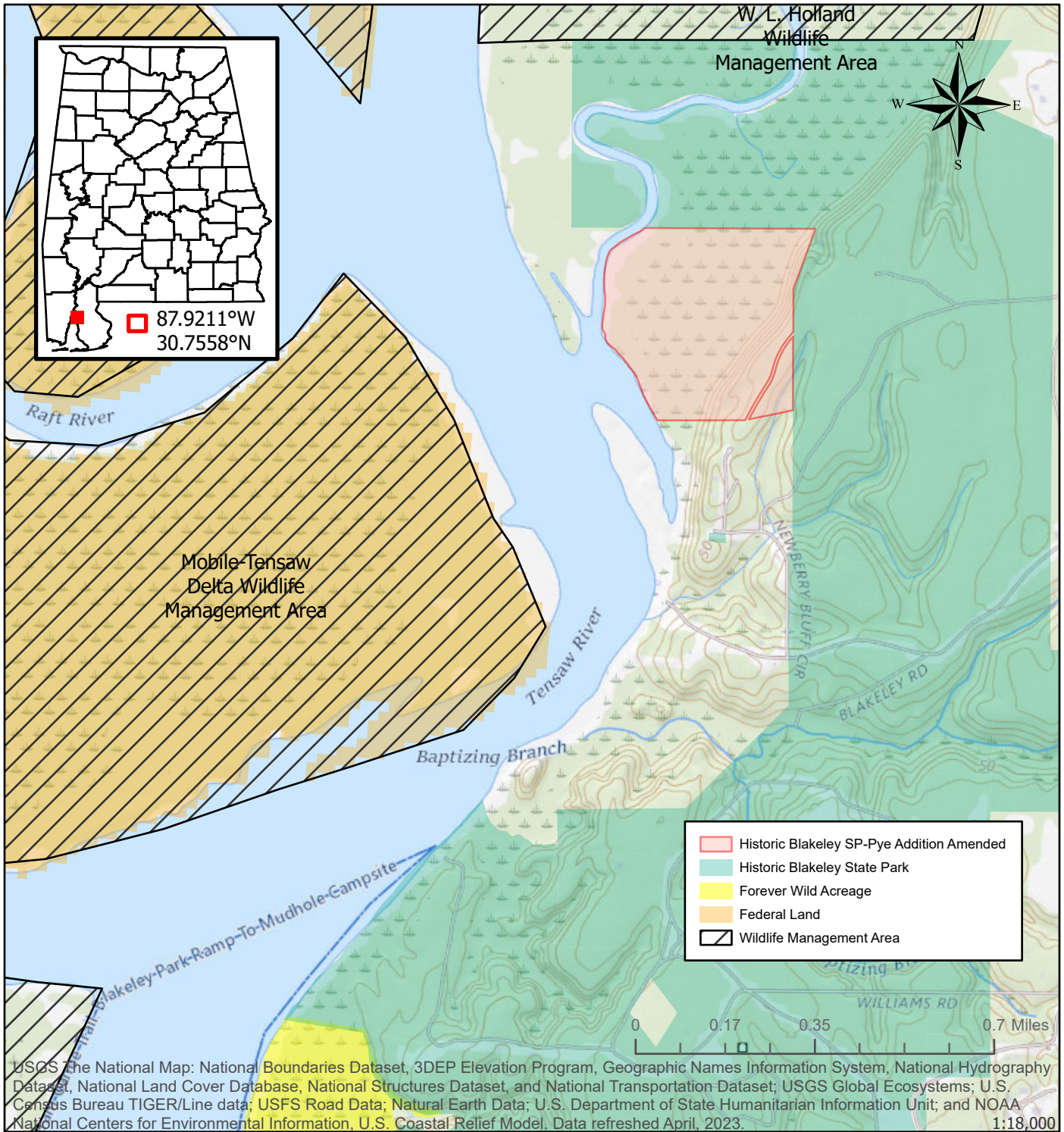
~85 acres

Baldwin County T03S R02E
 Bridgehead and Hurricane USGS Quadrangle



This map is for general overview information purposes only and, accordingly, should not be utilized or otherwise relied upon for any purpose. The Alabama Department of Conservation and Natural Resources and its affiliates assume no responsibility for any inaccuracies as to boundary lines, parcel ownership or other information contained within or depicted on the map.

Jo.Lewis 7/14/2023



USGS The National Map: National Boundaries Dataset, 3DEP Elevation Program, Geographic Names Information System, National Hydrography Dataset, National Land Cover Database, National Structures Dataset, and National Transportation Dataset; USGS Global Ecosystems; U.S. Census Bureau TIGER/Line data; USFS Road Data; Natural Earth Data; U.S. Department of State Humanitarian Information Unit; and NOAA National Centers for Environmental Information, U.S. Coastal Relief Model. Data refreshed April, 2023. 1:18,000

Alabama Department of Conservation and Natural Resources
Forever Wild Nomination
HISTORIC BLAKELEY SP-PYE ADDITION

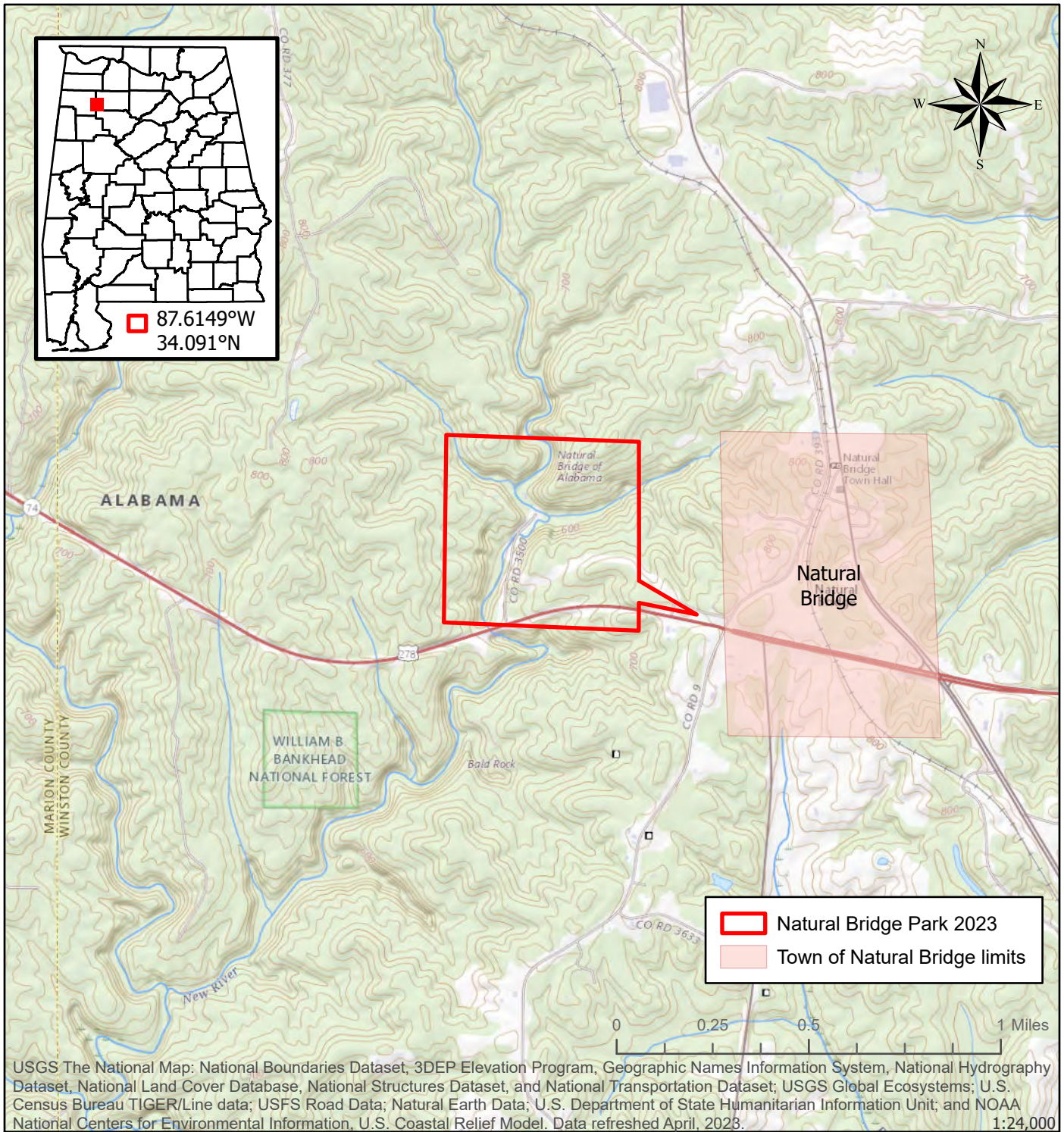
~81.5 acres

Baldwin County T03S R02E
 Bridgehead and Hurricane USGS Quadrangle



This map is for general overview information purposes only and, accordingly, should not be utilized or otherwise relied upon for any purpose. The Alabama Department of Conservation and Natural Resources and its affiliates assume no responsibility for any inaccuracies as to boundary lines, parcel ownership or other information contained within or depicted on the map.

Jo.Lewis 8/1/2023



USGS The National Map: National Boundaries Dataset, 3DEP Elevation Program, Geographic Names Information System, National Hydrography Dataset, National Land Cover Database, National Structures Dataset, and National Transportation Dataset; USGS Global Ecosystems; U.S. Census Bureau TIGER/Line data; USFS Road Data; Natural Earth Data; U.S. Department of State Humanitarian Information Unit; and NOAA National Centers for Environmental Information, U.S. Coastal Relief Model. Data refreshed April, 2023. 1:24,000

Alabama Department of Conservation and Natural Resources
Forever Wild Nomination
NATURAL BRIDGE PARK 2023

~149 acres

Winston County

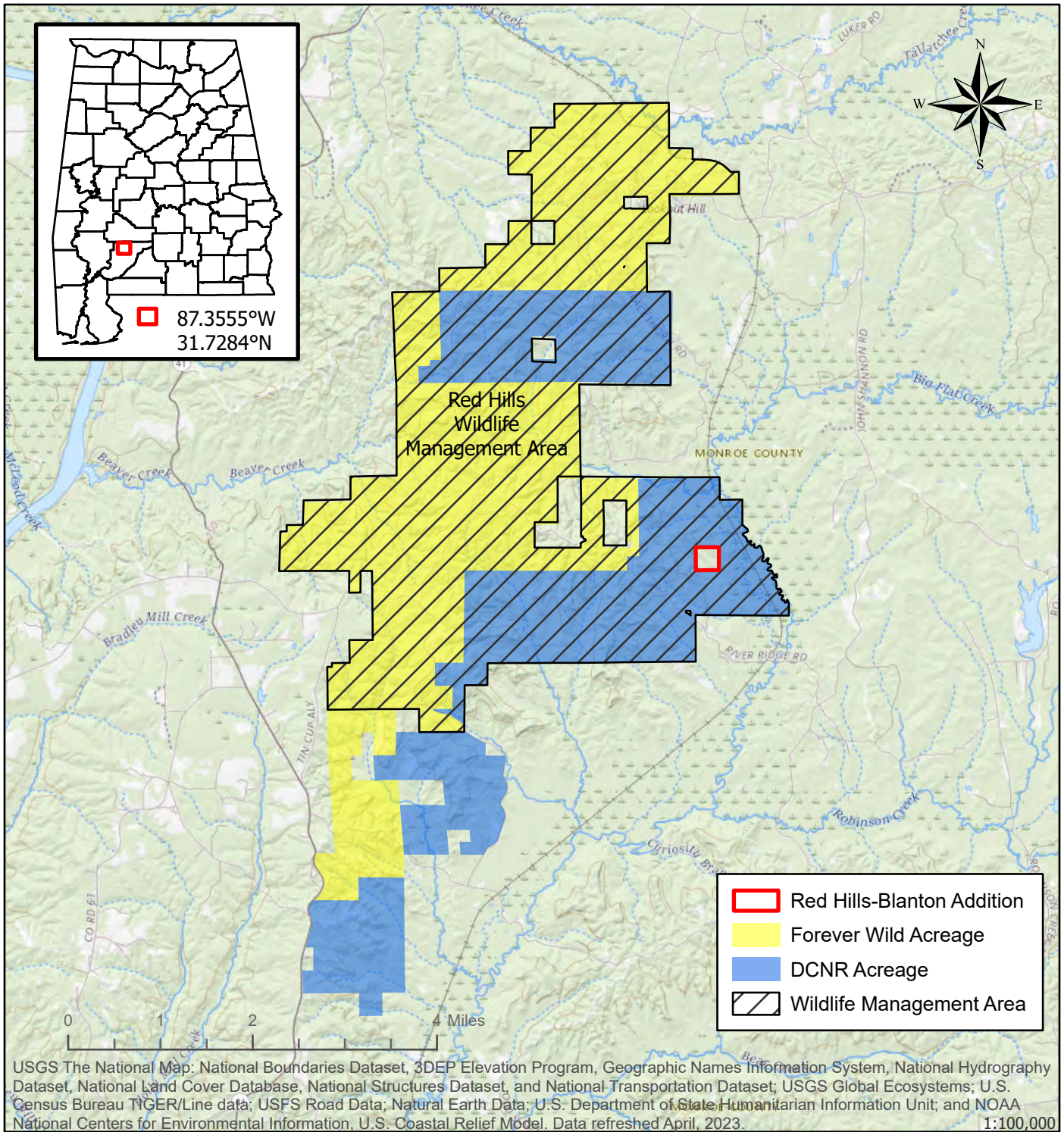
T11S R10E

Lynn USGS Quadrangle



This map is for general overview information purposes only and, accordingly, should not be utilized or otherwise relied upon for any purpose. The Alabama Department of Conservation and Natural Resources and its affiliates assume no responsibility for any inaccuracies as to boundary lines, parcel ownership or other information contained within or depicted on the map.

Jo.Lewis 6/29/2023



USGS The National Map: National Boundaries Dataset, 3DEP Elevation Program, Geographic Names Information System, National Hydrography Dataset, National Land Cover Database, National Structures Dataset, and National Transportation Dataset; USGS Global Ecosystems; U.S. Census Bureau TIGER/Line data; USFS Road Data; Natural Earth Data; U.S. Department of State Humanitarian Information Unit; and NOAA National Centers for Environmental Information, U.S. Coastal Relief Model. Data refreshed April, 2023. 1:100,000

Alabama Department of Conservation and Natural Resources
Forever Wild Nomination
RED HILLS-BLANTON ADDITION

~40 acres

Monroe County T09N R07E & T21S R04W
 Natchez USGS Quadrangle



Jo.Lewis 7/14/2023

This map is for general overview information purposes only and, accordingly, should not be utilized or otherwise relied upon for any purpose. The Alabama Department of Conservation and Natural Resources and its affiliates assume no responsibility for any inaccuracies as to boundary lines, parcel ownership or other information contained within or depicted on the map.