

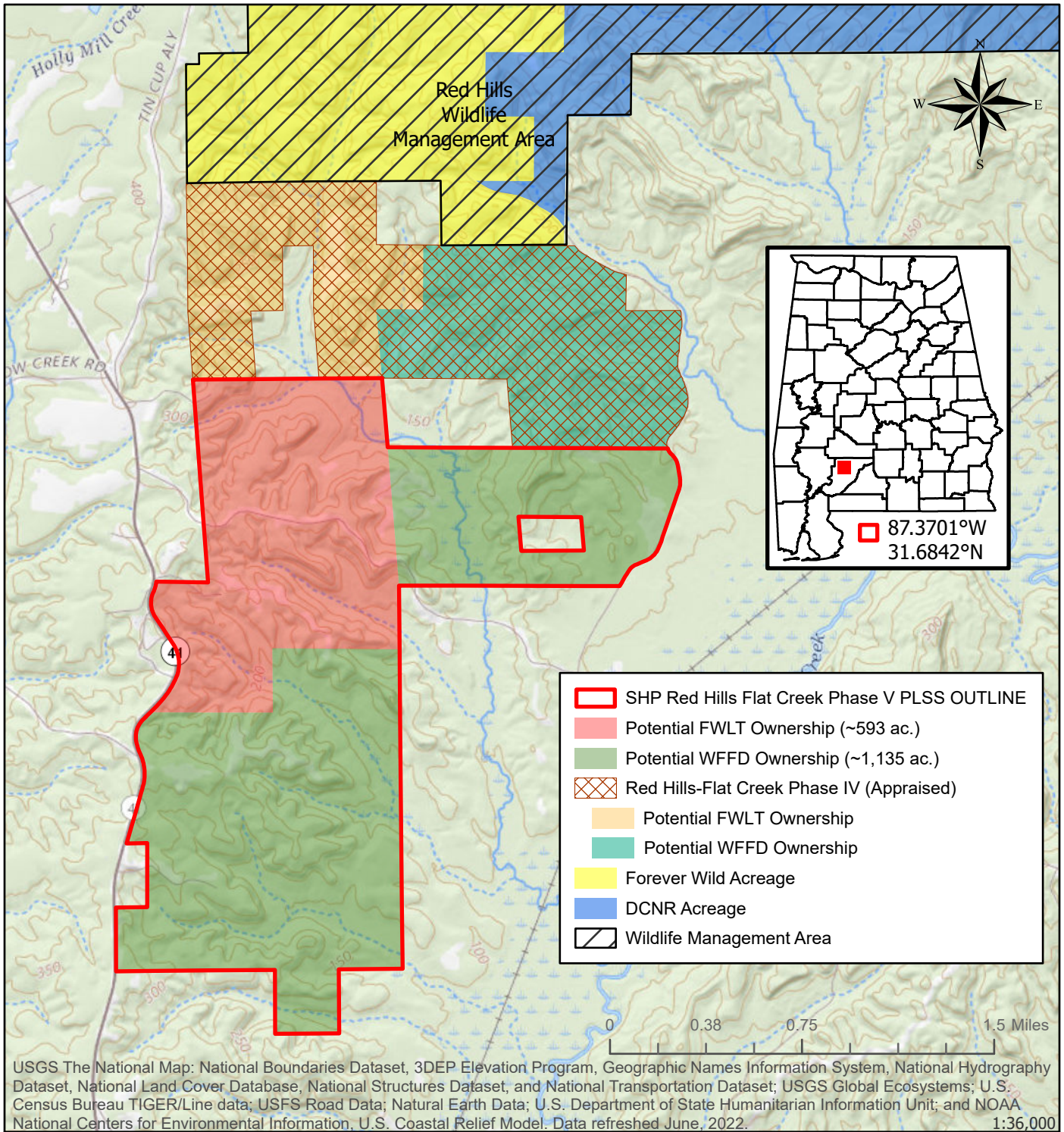
USGS The National Map: National Boundaries Dataset, 3DEP Elevation Program, Geographic Names Information System, National Hydrography Dataset, National Land Cover Database, National Structures Dataset, and National Transportation Dataset; USGS Global Ecosystems; U.S. Census Bureau TIGER/Line data; USFS Road Data; Natural Earth Data; U.S. Department of State Humanitarian Information Unit; and NOAA National Centers for Environmental Information, U.S. Coastal Relief Model, Data refreshed June, 2022. 1:30,000

Alabama Department of Conservation and Natural Resources
Forever Wild Nomination
OAK MTN. STATE PARK-BELCHER ADDITION PHASE 2
 ~277 acres
 Shelby County T19S R01W
 Chelsea USGS Quadrangle



This map is for general overview information purposes only and, accordingly, should not be utilized or otherwise relied upon for any purpose. The Alabama Department of Conservation and Natural Resources and its affiliates assume no responsibility for any inaccuracies as to boundary lines, parcel ownership or other information contained within or depicted on the map.

Jo.Lewis 7/20/2022

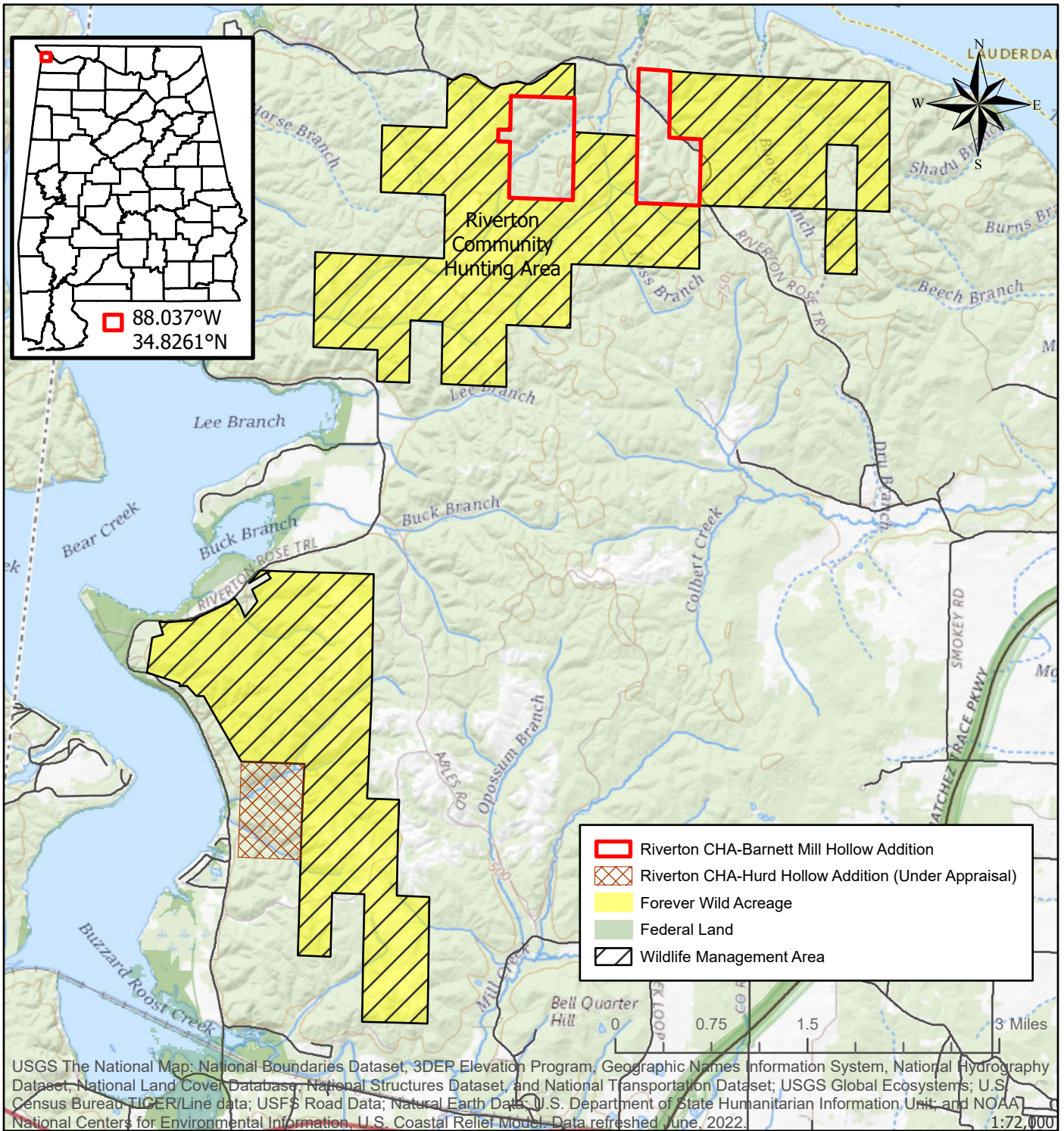


Alabama Department of Conservation and Natural Resources
Forever Wild Nomination
RED HILLS-FLAT CREEK PHASE V
 ~593 acres of ~1,728 acres
 Monroe County T08N R07E & T09N R07E
 Franklin and Natchez USGS Quadrangle



This map is for general overview information purposes only and, accordingly, should not be utilized or otherwise relied upon for any purpose. The Alabama Department of Conservation and Natural Resources and its affiliates assume no responsibility for any inaccuracies as to boundary lines, parcel ownership or other information contained within or depicted on the map.

Jo.Lewis 10/11/2022



USGS The National Map: National Boundaries Dataset, 3DEP Elevation Program, Geographic Names Information System, National Hydrography Dataset, National Land Cover Database, National Structures Dataset, and National Transportation Dataset; USGS Global Ecosystems; U.S. Census Bureau, TIGER/Line data; USFS Road Data; Natural Earth Data; U.S. Department of State Humanitarian Information Unit; and NOAA National Centers for Environmental Information, U.S. Coastal Relief Model. Data refreshed June, 2022. 1:72,000

**Alabama Department of Conservation and Natural Resources
Forever Wild Nomination**

RIVERTON CHA-BARNETT MILL HOLLOW ADDITION

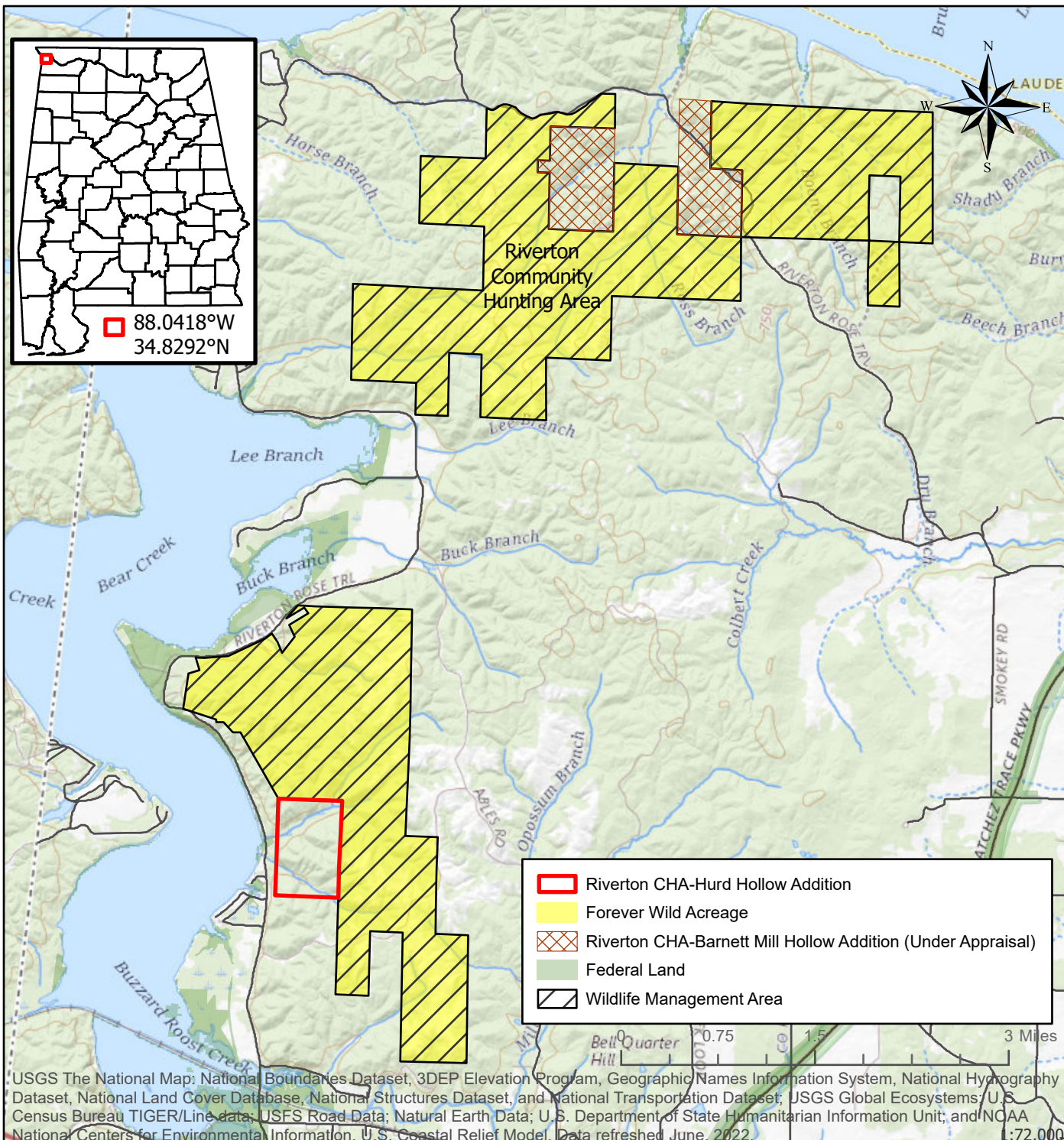
~507 acres

Colbert County T02S R14W
Margerum and Waterloo USGS Quadrangles



This map is for general overview information purposes only and, accordingly, should not be utilized or otherwise relied upon for any purpose. The Alabama Department of Conservation and Natural Resources and its affiliates assume no responsibility for any inaccuracies as to boundary lines, parcel ownership or other information contained within or depicted on the map.

Jo.Lewis 10/14/2022



USGS The National Map: National Boundaries Dataset, 3DEP Elevation Program, Geographic Names Information System, National Hydrography Dataset, National Land Cover Database, National Structures Dataset, and National Transportation Dataset; USGS Global Ecosystems/U.S. Census Bureau TIGER/Line data; USFS Road Data; Natural Earth Data; U.S. Department of State Humanitarian Information Unit; and NOAA National Centers for Environmental Information, U.S. Coastal Relief Model. Data refreshed June, 2022. 1:72,000

Alabama Department of Conservation and Natural Resources
Forever Wild Nomination
RIVERTON CHA-HURD HOLLOW ADDITION

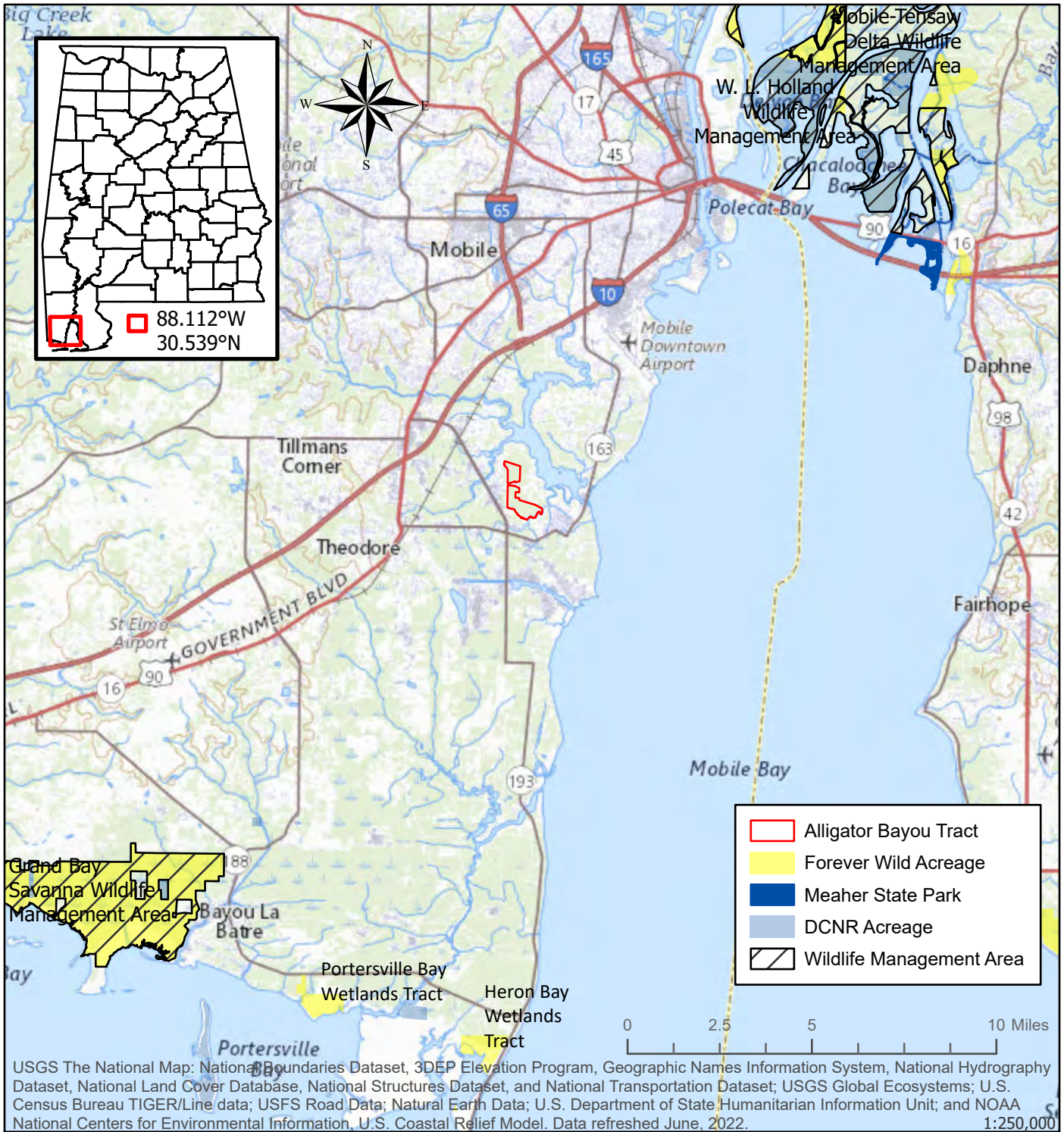
~235 acres

Colbert County T03S R15W
 Margerum and Waterloo USGS Quadrangles



This map is for general overview information purposes only and, accordingly, should not be utilized or otherwise relied upon for any purpose. The Alabama Department of Conservation and Natural Resources and its affiliates assume no responsibility for any inaccuracies as to boundary lines, parcel ownership or other information contained within or depicted on the map.

Jo.Lewis 10/14/2022



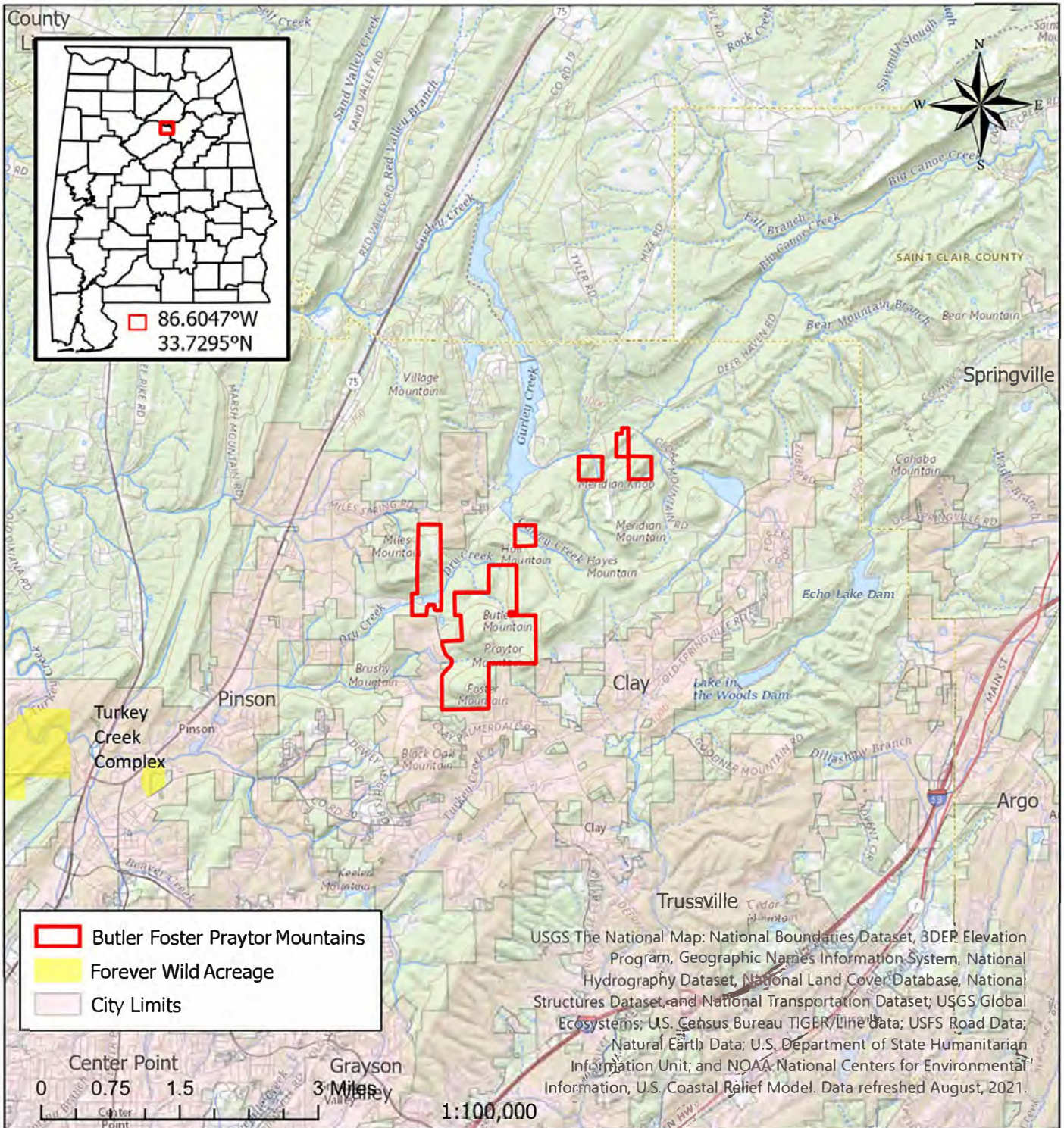
USGS The National Map: National Boundaries Dataset, 3DEP Elevation Program, Geographic Names Information System, National Hydrography Dataset, National Land Cover Database, National Structures Dataset, and National Transportation Dataset; USGS Global Ecosystems; U.S. Census Bureau TIGER/Line data; USFS Road Data; Natural Earth Data; U.S. Department of State Humanitarian Information Unit; and NOAA National Centers for Environmental Information, U.S. Coastal Relief Model. Data refreshed June, 2022. 1:250,000

Alabama Department of Conservation and Natural Resources
Forever Wild Nomination
ALLIGATOR BAYOU
 ~383 acres
 Mobile County T05S R01W
 Hollingers Island USGS Quadrangle



This map is for general overview information purposes only and, accordingly, should not be utilized or otherwise relied upon for any purpose. The Alabama Department of Conservation and Natural Resources and its affiliates assume no responsibility for any inaccuracies as to boundary lines, parcel ownership or other information contained within or depicted on the map.

Jo.Lewis 10/13/2022



Alabama Department of Conservation and Natural Resources
Forever Wild Nomination
BUTLER FOSTER PRAYTOR MOUNTAINS

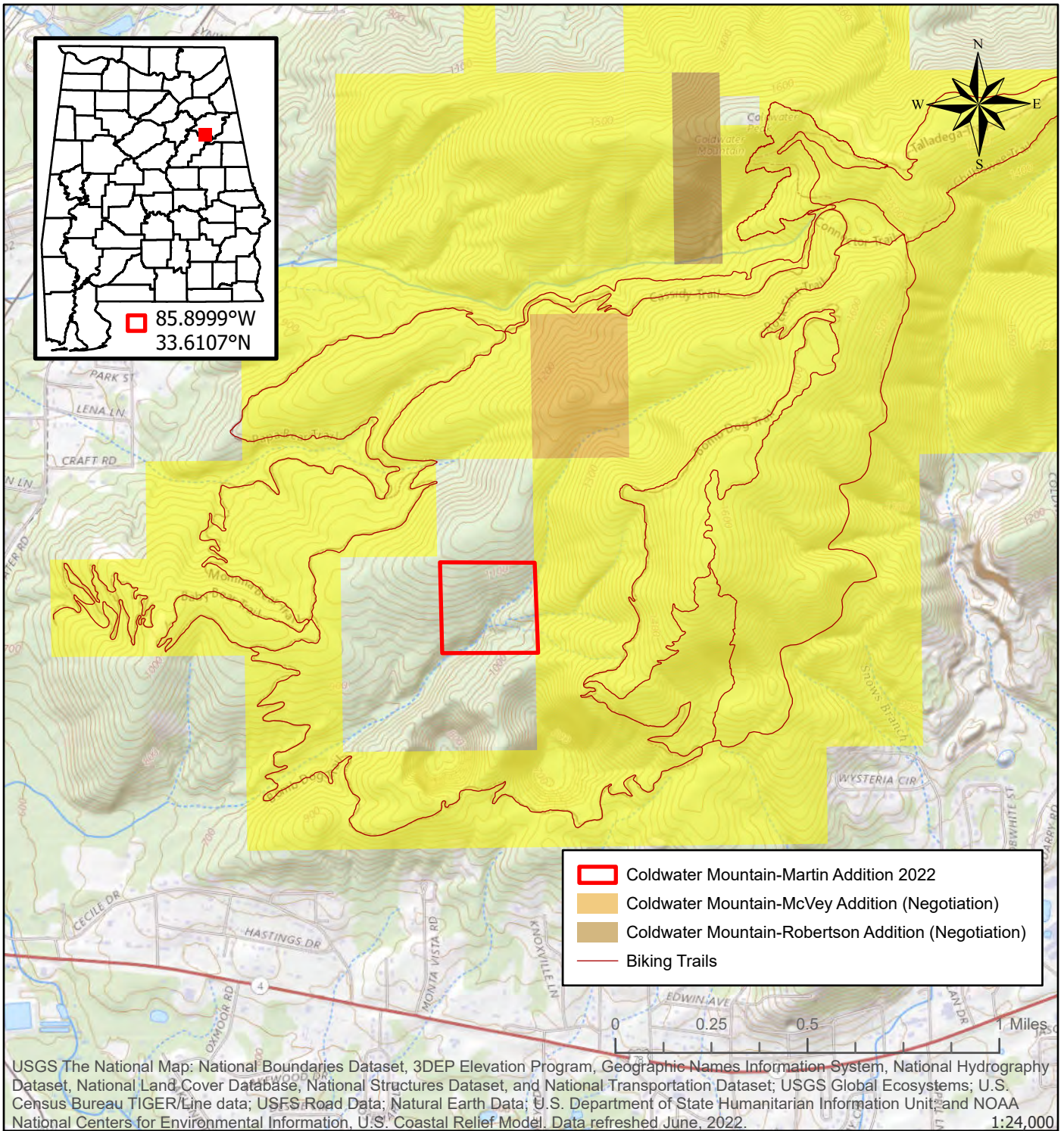
~939 acres

Jefferson County T15SR01W and T15S R01E
Argo, Pinson, & Remlap USGS Quadrangle



This map is for general overview information purposes only and, accordingly, should not be utilized or otherwise relied upon for any purpose. The Alabama Department of Conservation and Natural Resources and its affiliates assume no responsibility for any inaccuracies as to boundary lines, parcel ownership or other information contained within or depicted on the map.

10/21/2021
Jo.Lewis



USGS The National Map: National Boundaries Dataset, 3DEP Elevation Program, Geographic Names Information System, National Hydrography Dataset, National Land Cover Database, National Structures Dataset, and National Transportation Dataset; USGS Global Ecosystems; U.S. Census Bureau TIGER/Line data; USFS Road Data; Natural Earth Data; U.S. Department of State Humanitarian Information Unit; and NOAA National Centers for Environmental Information, U.S. Coastal Relief Model. Data refreshed June, 2022. 1:24,000

Alabama Department of Conservation and Natural Resources
Forever Wild Nomination
COLDWATER MOUNTAIN-MARTIN ADDITION 2022

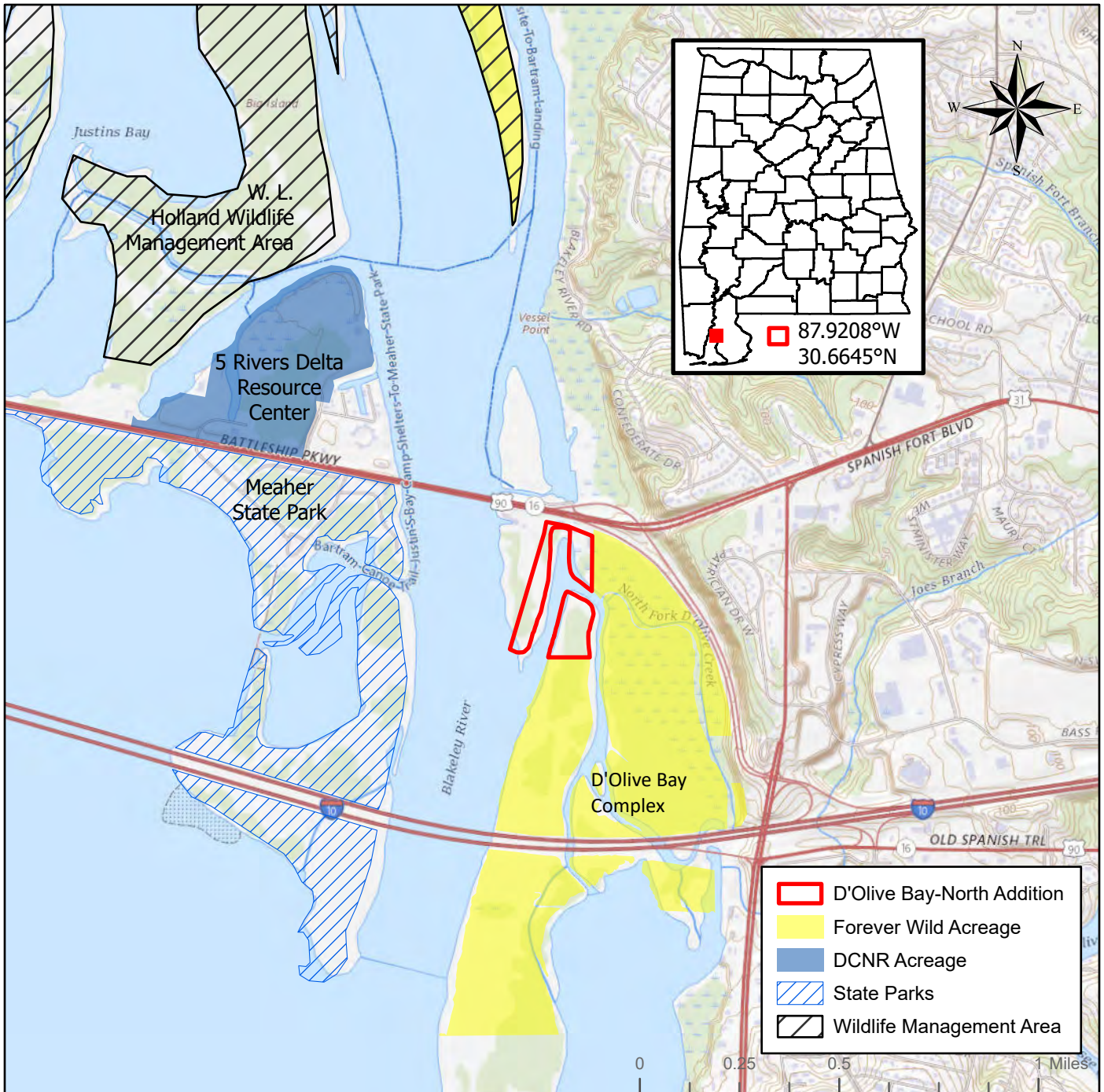
~37 acres

Calhoun County T16S R07E
 Mumford USGS Quadrangle



This map is for general overview information purposes only and, accordingly, should not be utilized or otherwise relied upon for any purpose. The Alabama Department of Conservation and Natural Resources and its affiliates assume no responsibility for any inaccuracies as to boundary lines, parcel ownership or other information contained within or depicted on the map.

Jo.Lewis 10/18/2022



USGS The National Map: National Boundaries Dataset, 3DEP Elevation Program, Geographic Names Information System, National Hydrography Dataset, National Land Cover Database, National Structures Dataset, and National Transportation Dataset; USGS Global Ecosystems; U.S. Census Bureau TIGER/Line data; USFS Road Data; Natural Earth Data; U.S. Department of State Humanitarian Information Unit; and NOAA National Centers for Environmental Information, U.S. Coastal Relief Model. Data refreshed June, 2022. 1:24,000

Alabama Department of Conservation and Natural Resources
Forever Wild Nomination
D'OLIVE BAY-NORTH ADDITION

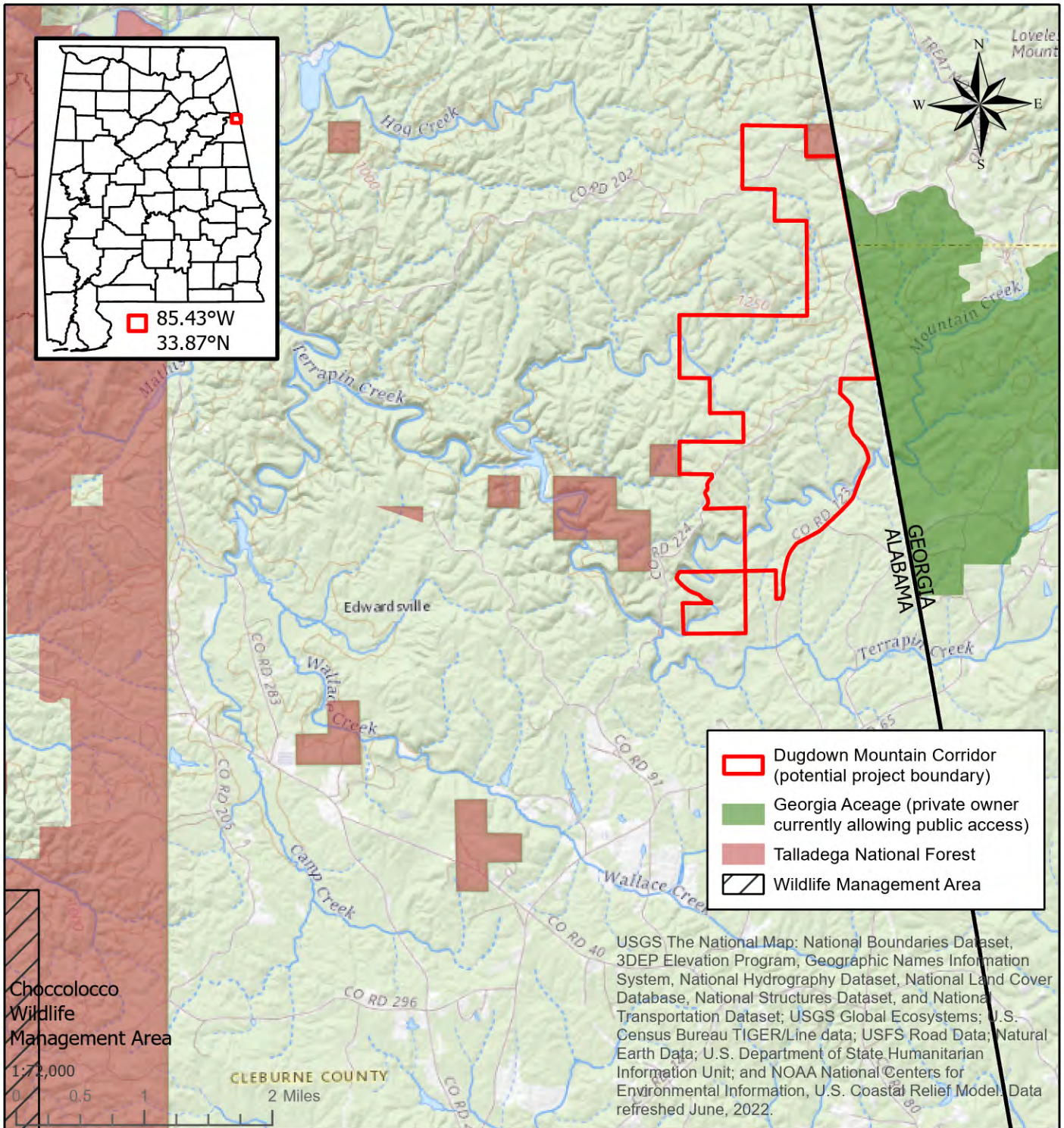
~23 acres

Baldwin County T04S R02E
 Bridgehead USGS Quadrangle



This map is for general overview information purposes only and, accordingly, should not be utilized or otherwise relied upon for any purpose. The Alabama Department of Conservation and Natural Resources and its affiliates assume no responsibility for any inaccuracies as to boundary lines, parcel ownership or other information contained within or depicted on the map.

Jo.Lewis 10/18/2022



Alabama Department of Conservation and Natural Resources
Forever Wild Nomination
DUGDOWN MOUNTAIN CORRIDOR

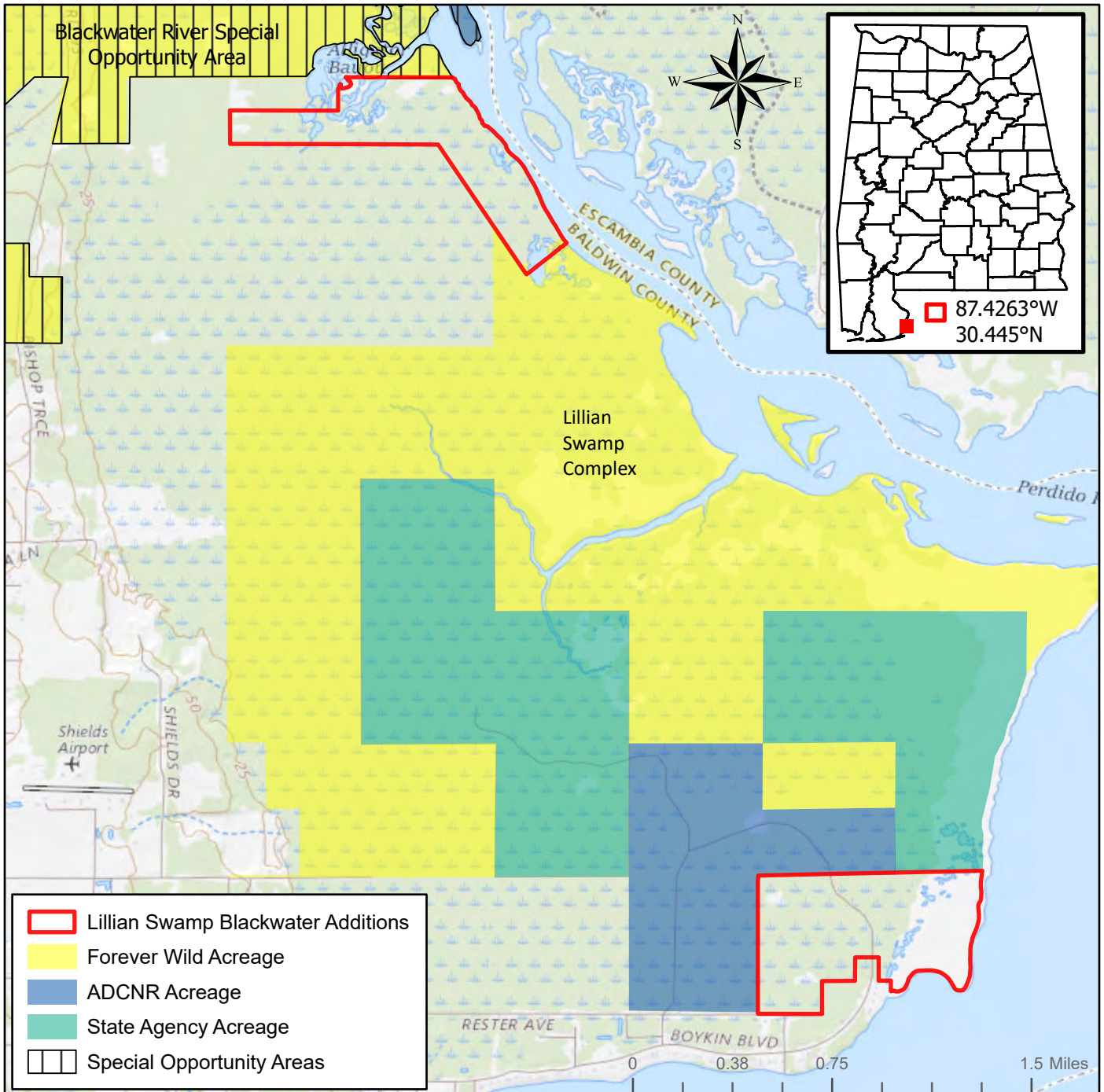
~1,984 acres

Cleburne County T13S R12E
 Borden Springs and Oak Level USGS Quadrangles



This map is for general overview information purposes only and, accordingly, should not be utilized or otherwise relied upon for any purpose. The Alabama Department of Conservation and Natural Resources and its affiliates assume no responsibility for any inaccuracies as to boundary lines, parcel ownership or other information contained within or depicted on the map.

Jo.Lewis 7/25/2022



USGS The National Map; National Boundaries Dataset, 3DEP Elevation Program, Geographic Names Information System, National Hydrography Dataset, National Land Cover Database, National Structures Dataset, and National Transportation Dataset; USGS Global Ecosystems; U.S. Census Bureau TIGER/Line data; USFS Road Data; Natural Earth Data; U.S. Department of State Humanitarian Information Unit; and NOAA National Centers for Environmental Information, U.S. Coastal Relief Model. Data refreshed June, 2022. 1:36,000

Alabama Department of Conservation and Natural Resources
Forever Wild Nomination
LILLIAN SWAMP BLACKWATER ADDITIONS

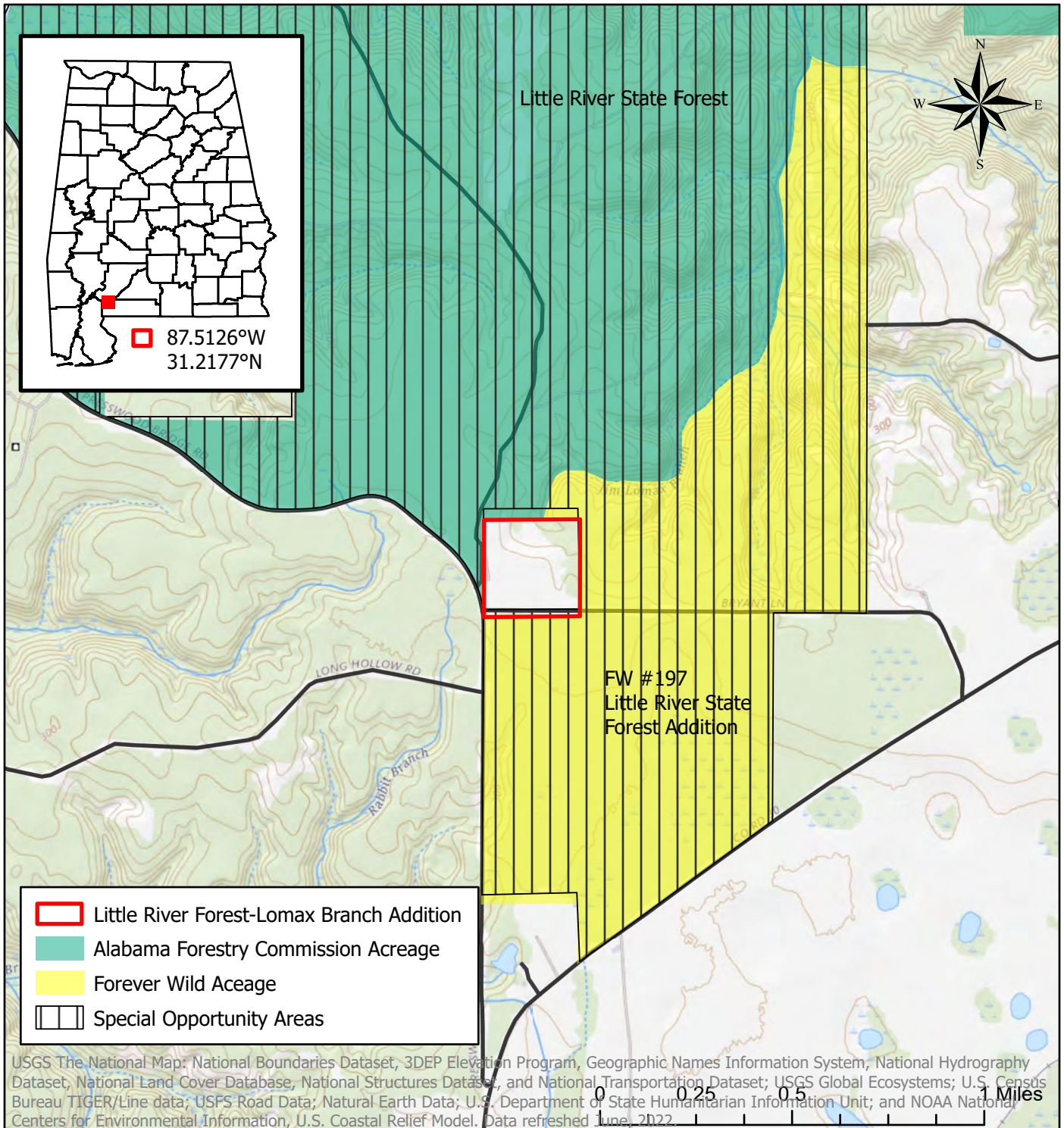
~376 acres

Baldwin County T07S R06E
 Lillian USGS Quadrangle



This map is for general overview information purposes only and, accordingly, should not be utilized or otherwise relied upon for any purpose. The Alabama Department of Conservation and Natural Resources and its affiliates assume no responsibility for any inaccuracies as to boundary lines, parcel ownership or other information contained within or depicted on the map.

Jo.Lewis 10/18/2022



USGS The National Map: National Boundaries Dataset, 3DEP Elevation Program, Geographic Names Information System, National Hydrography Dataset, National Land Cover Database, National Structures Dataset, and National Transportation Dataset; USGS Global Ecosystems; U.S. Census Bureau TIGER/Line data; USFS Road Data; Natural Earth Data; U.S. Department of State Humanitarian Information Unit; and NOAA National Centers for Environmental Information, U.S. Coastal Relief Model. Data refreshed June, 2022.

Alabama Department of Conservation and Natural Resources
Forever Wild Nomination
LITTLE RIVER FOREST-LOMAX BRANCH ADDITION

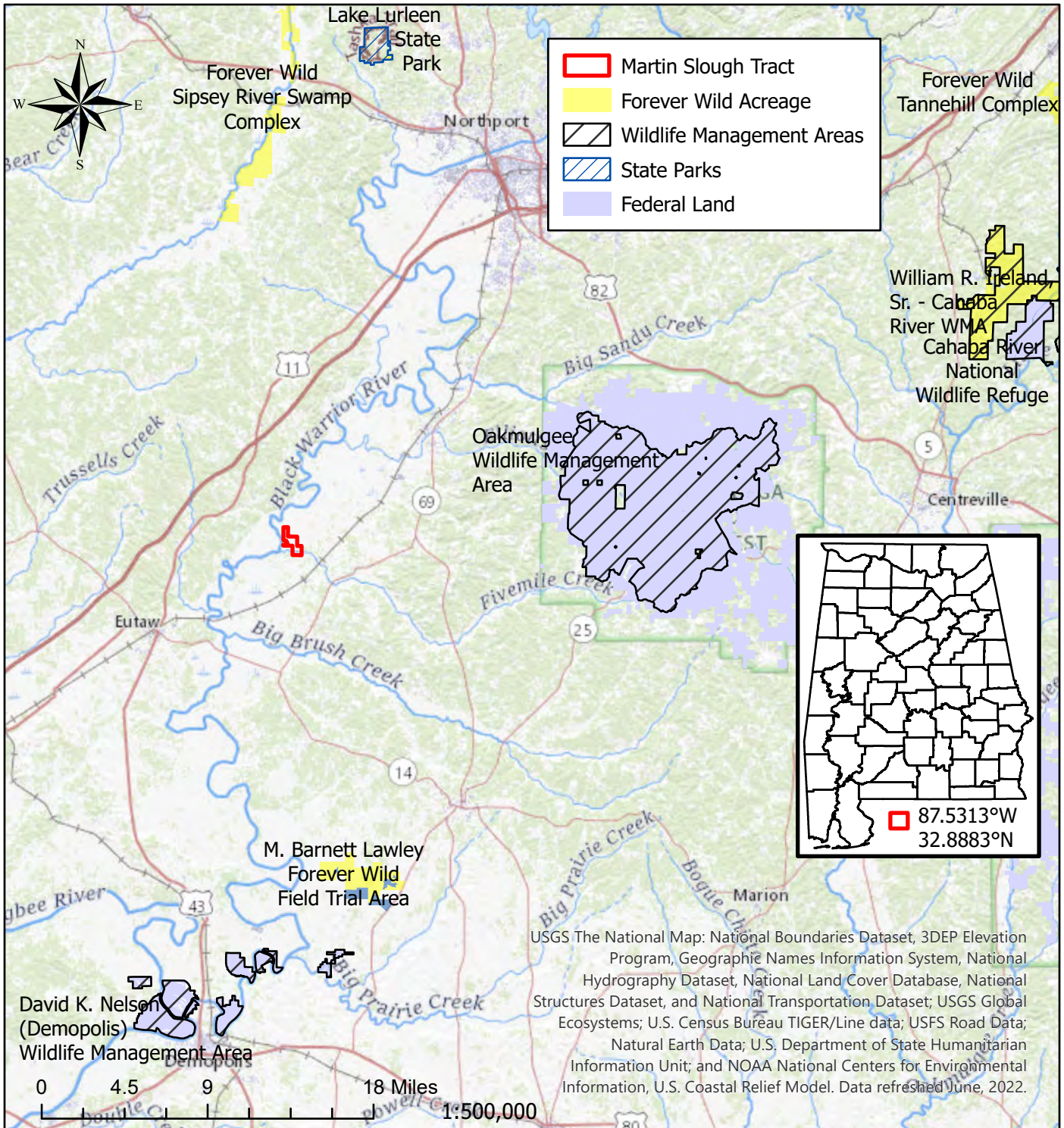
~39 acres

Escambia County T03N R06E
 McCullough USGS Quadrangle



This map is for general overview information purposes only and, accordingly, should not be utilized or otherwise relied upon for any purpose. The Alabama Department of Conservation and Natural Resources and its affiliates assume no responsibility for any inaccuracies as to boundary lines, parcel ownership or other information contained within or depicted on the map.

Jo.Lewis 9/21/2022



**Alabama Department of Conservation and Natural Resources
Forever Wild Nomination
MARTIN SLOUGH TRACT**

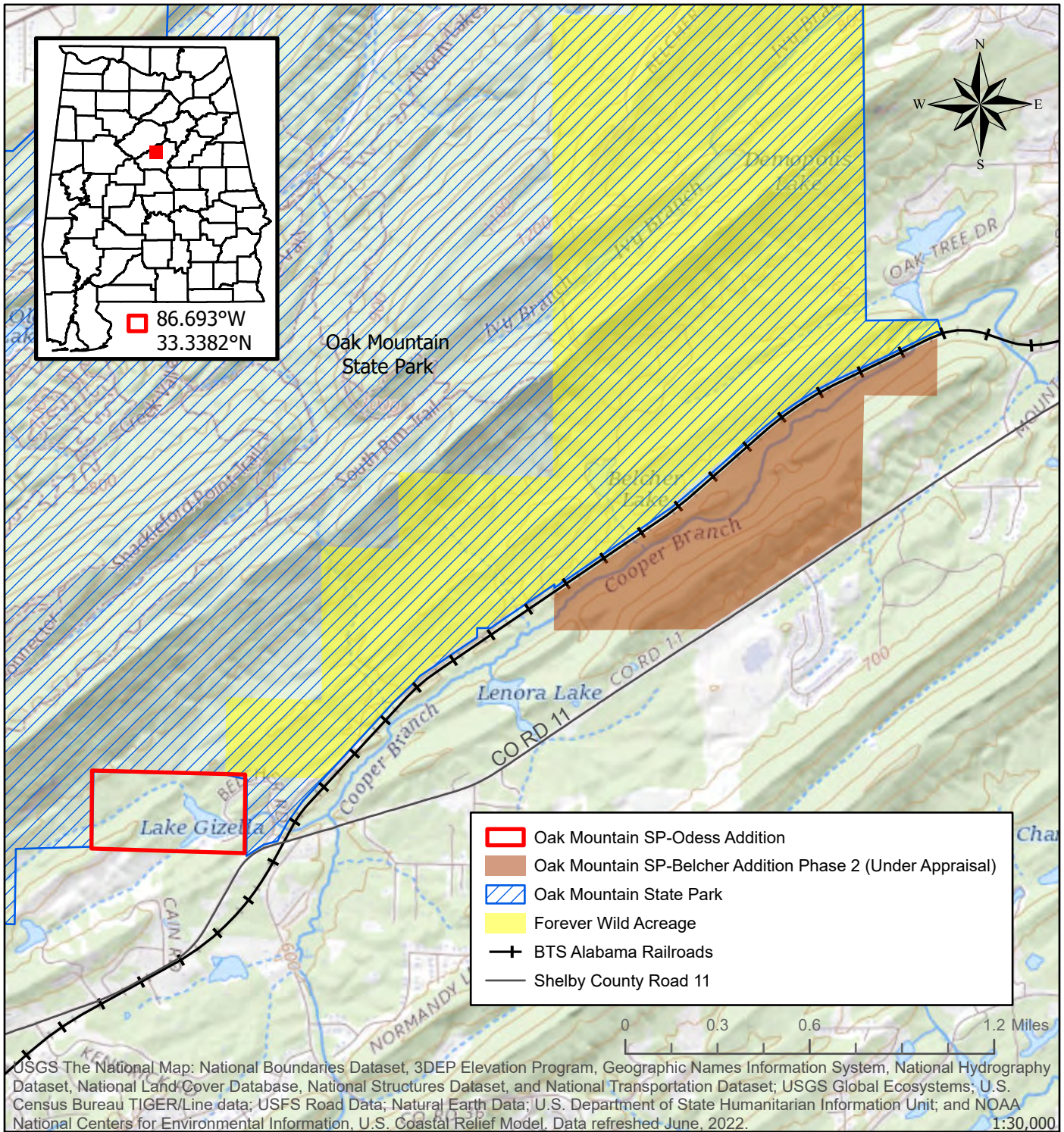
~429 acres

Hale County T22N R03E
Knoxville and Moundville West USGS Quadrangles



This map is for general overview information purposes only and, accordingly, should not be utilized or otherwise relied upon for any purpose. The Alabama Department of Conservation and Natural Resources and its affiliates assume no responsibility for any inaccuracies as to boundary lines, parcel ownership or other information contained within or depicted on the map.

10/14/2022
Jo.Lewis

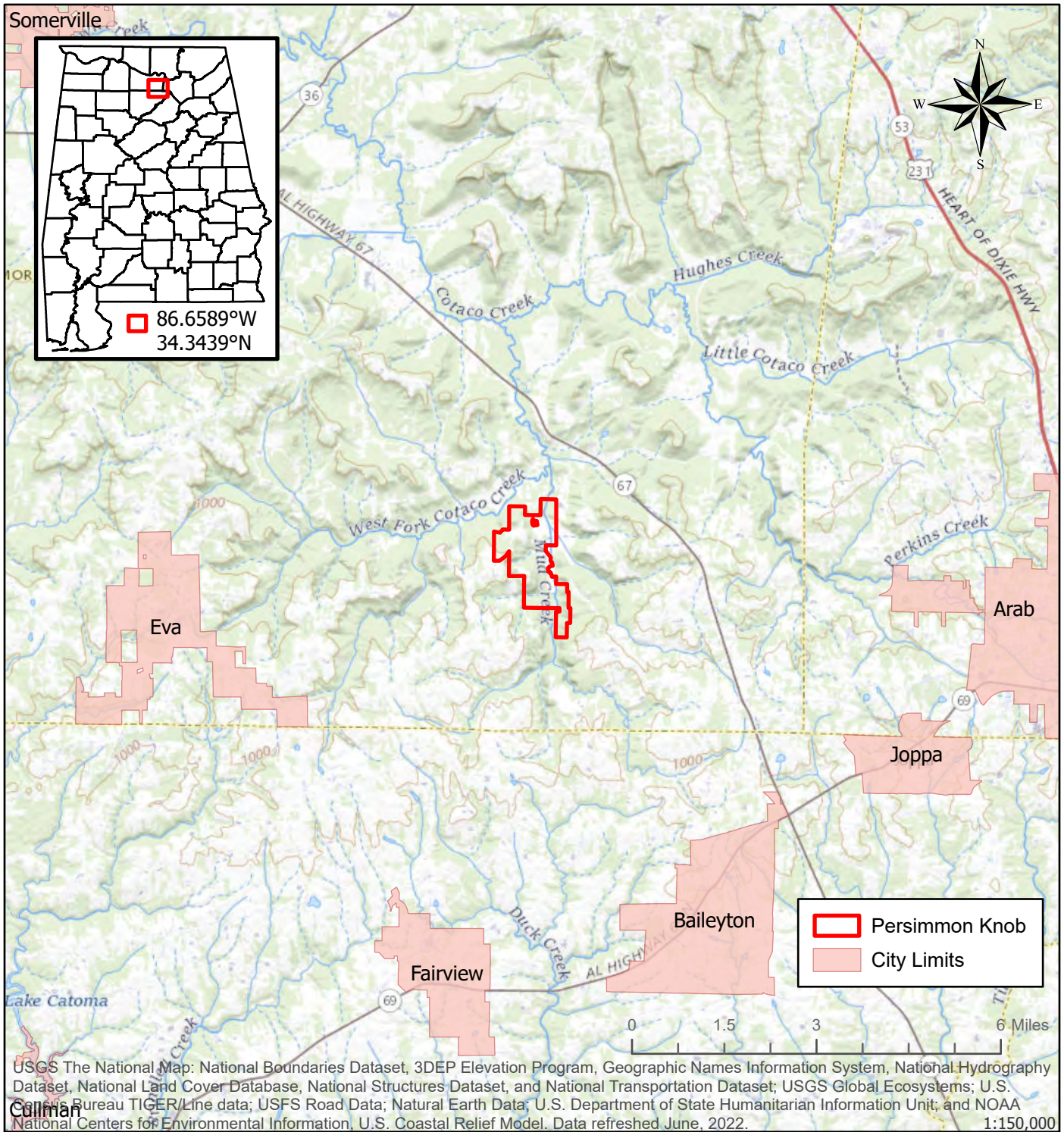


Alabama Department of Conservation and Natural Resources
Forever Wild Nomination
OAK MTN. STATE PARK-ODESS ADDITION
 ~81 acres
 Shelby County T20S R02W
 Chelsea USGS Quadrangle



This map is for general overview information purposes only and, accordingly, should not be utilized or otherwise relied upon for any purpose. The Alabama Department of Conservation and Natural Resources and its affiliates assume no responsibility for any inaccuracies as to boundary lines, parcel ownership or other information contained within or depicted on the map.

Jo.Lewis 9/21/2022



USGS The National Map: National Boundaries Dataset, 3DEP Elevation Program, Geographic Names Information System, National Hydrography Dataset, National Land Cover Database, National Structures Dataset, and National Transportation Dataset; USGS Global Ecosystems; U.S. Census Bureau TIGER/Line data; USFS Road Data; Natural Earth Data; U.S. Department of State Humanitarian Information Unit; and NOAA National Centers for Environmental Information, U.S. Coastal Relief Model. Data refreshed June, 2022. 1:150,000

Alabama Department of Conservation and Natural Resources
Forever Wild Nomination
PERSIMMON KNOB

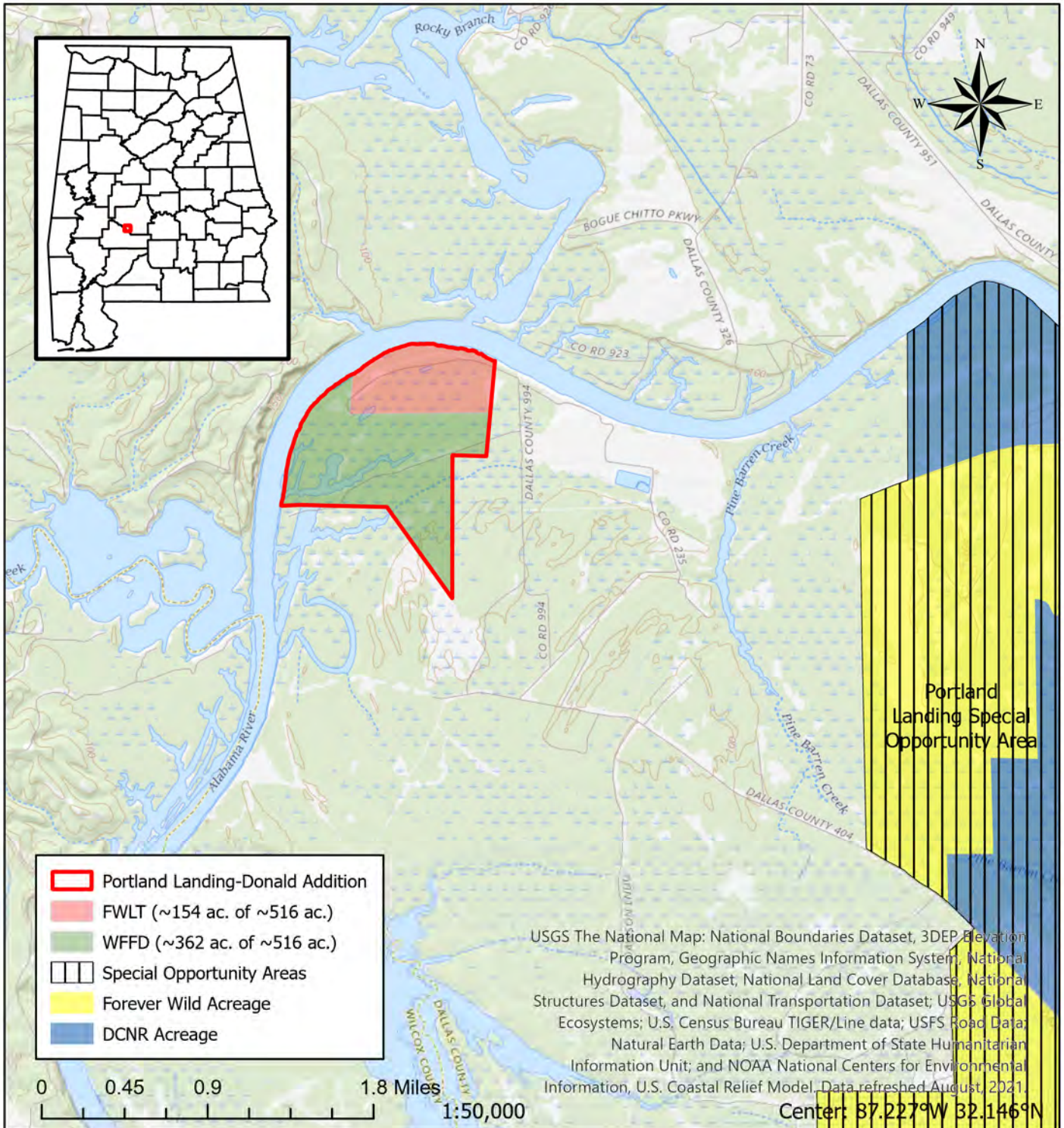
~854 acres

Morgan County T08S R10W
 Lawrence Cove USGS Quadrangle



This map is for general overview information purposes only and, accordingly, should not be utilized or otherwise relied upon for any purpose. The Alabama Department of Conservation and Natural Resources and its affiliates assume no responsibility for any inaccuracies as to boundary lines, parcel ownership or other information contained within or depicted on the map.

Jo.Lewis 10/18/2022



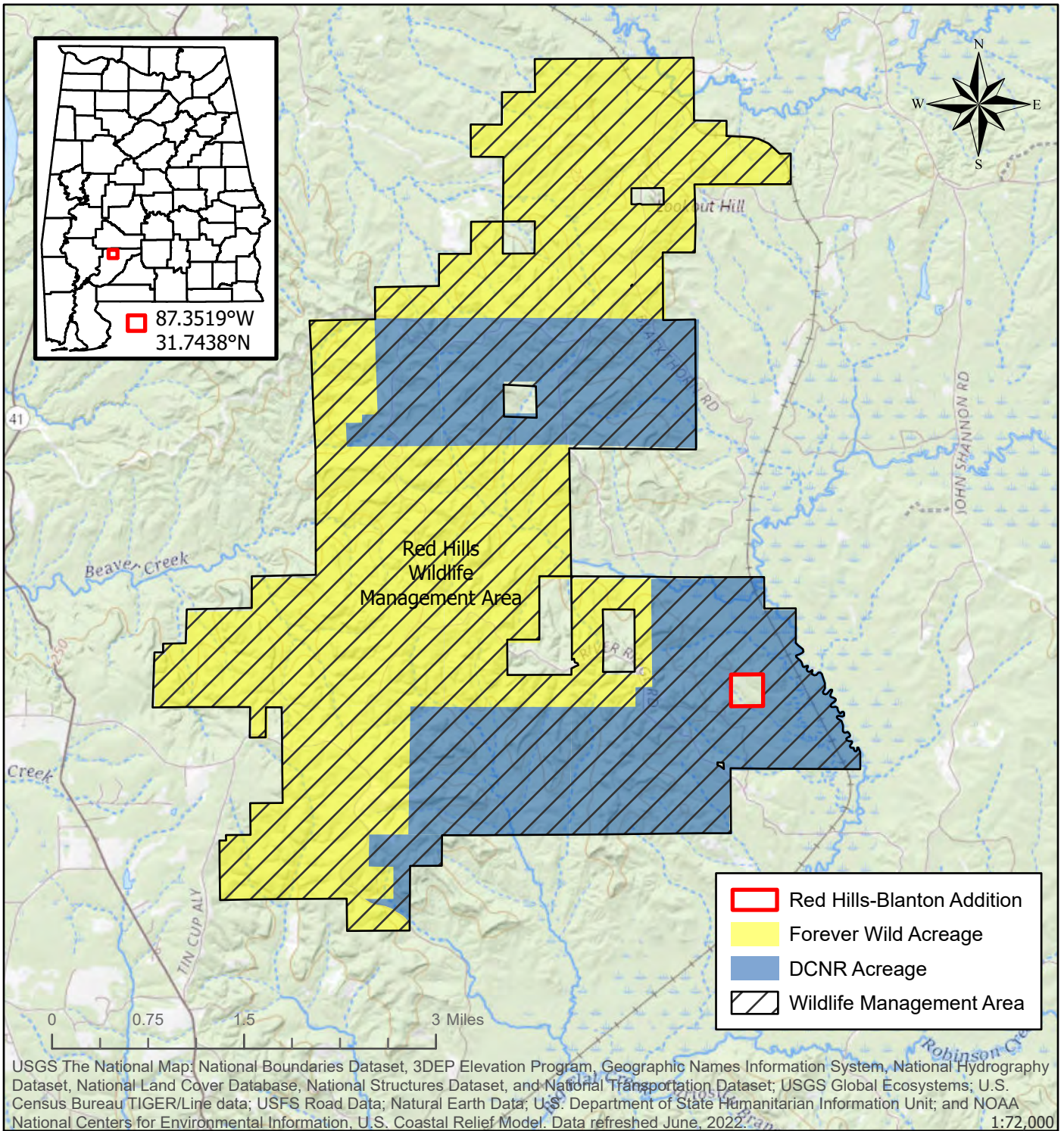
Alabama Department of Conservation and Natural Resources
Forever Wild Nomination
PORTLAND LANDING SOA-DONALD ADDITION

~154 ac. of ~516 acres
 Dallas County T14N R08E
 Tasso USGS Quadrangle



This map is for general overview information purposes only and, accordingly, should not be utilized or otherwise relied upon for any purpose.
 The Alabama Department of Conservation and Natural Resources and its affiliates assume no responsibility for any inaccuracies as to boundary lines, parcel ownership or other information contained within or depicted on the map.

2/1/2022
 Jo.Lewis



	Red Hills-Blanton Addition
	Forever Wild Acreage
	DCNR Acreage
	Wildlife Management Area

USGS The National Map; National Boundaries Dataset, 3DEP Elevation Program, Geographic Names Information System, National Hydrography Dataset, National Land Cover Database, National Structures Dataset, and National Transportation Dataset; USGS Global Ecosystems; U.S. Census Bureau TIGER/Line data; USFS Road Data; Natural Earth Data; U.S. Department of State Humanitarian Information Unit; and NOAA National Centers for Environmental Information, U.S. Coastal Relief Model. Data refreshed June, 2022. 1:72,000

Alabama Department of Conservation and Natural Resources
Forever Wild Nomination
RED HILLS-BLANTON ADDITION

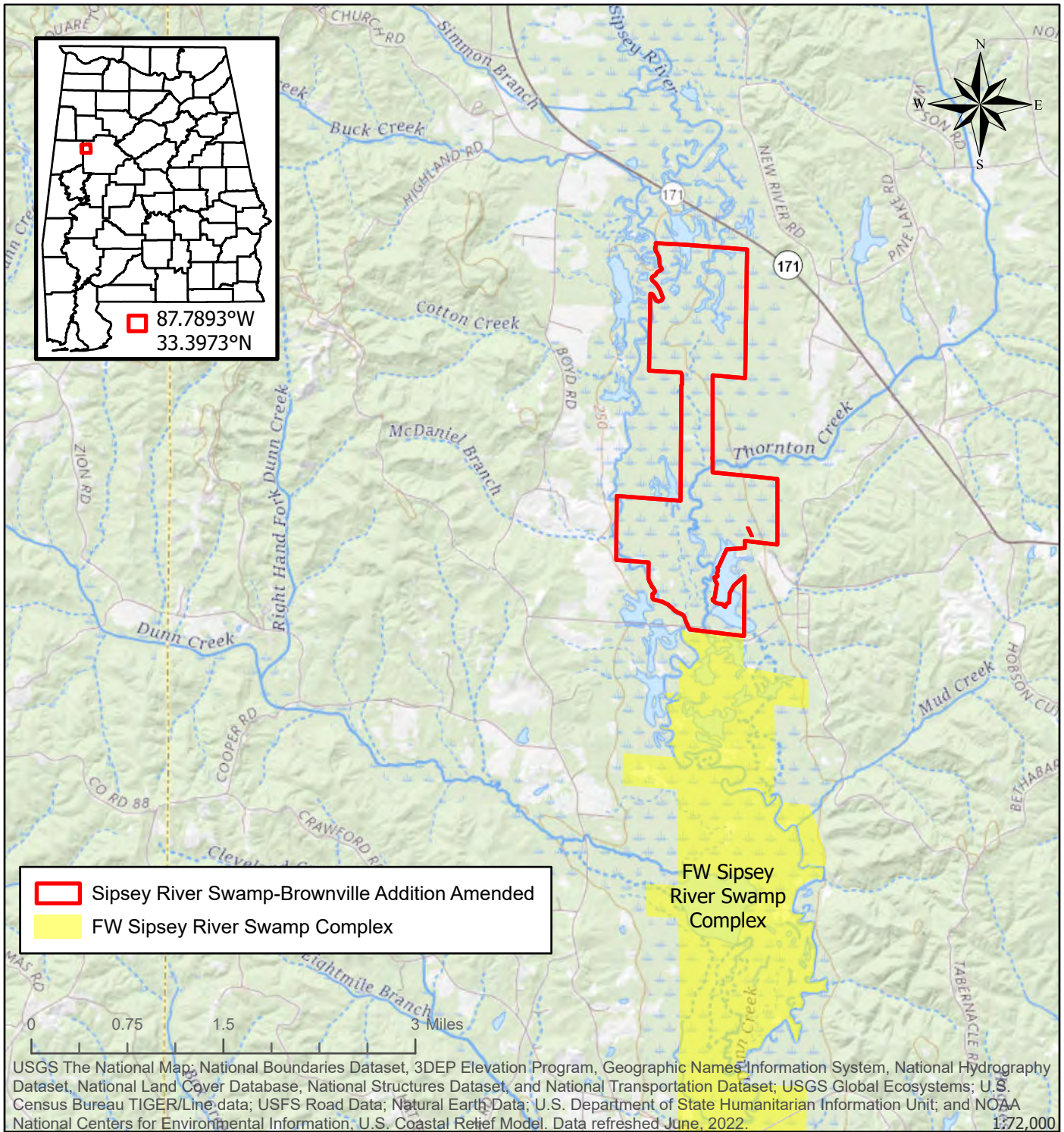
~40 acres

Monroe County T09N R07E & T21S R04W
 Natchez USGS Quadrangle



This map is for general overview information purposes only and, accordingly, should not be utilized or otherwise relied upon for any purpose. The Alabama Department of Conservation and Natural Resources and its affiliates assume no responsibility for any inaccuracies as to boundary lines, parcel ownership or other information contained within or depicted on the map.

Jo.Lewis 9/21/2022



Sipsey River Swamp-Brownville Addition Amended
 FW Sipsey River Swamp Complex

USGS The National Map; National Boundaries Dataset, 3DEP Elevation Program, Geographic Names Information System, National Hydrography Dataset, National Land Cover Database, National Structures Dataset, and National Transportation Dataset; USGS Global Ecosystems; U.S. Census Bureau TIGER/Line data; USFS Road Data; Natural Earth Data; U.S. Department of State Humanitarian Information Unit; and NOAA National Centers for Environmental Information, U.S. Coastal Relief Model. Data refreshed June, 2022. 1:72,000

**Alabama Department of Conservation and Natural Resources
Forever Wild Nomination**

SIPSEY RIVER SWAMP-BROWNVILLE ADDITION AMENDED

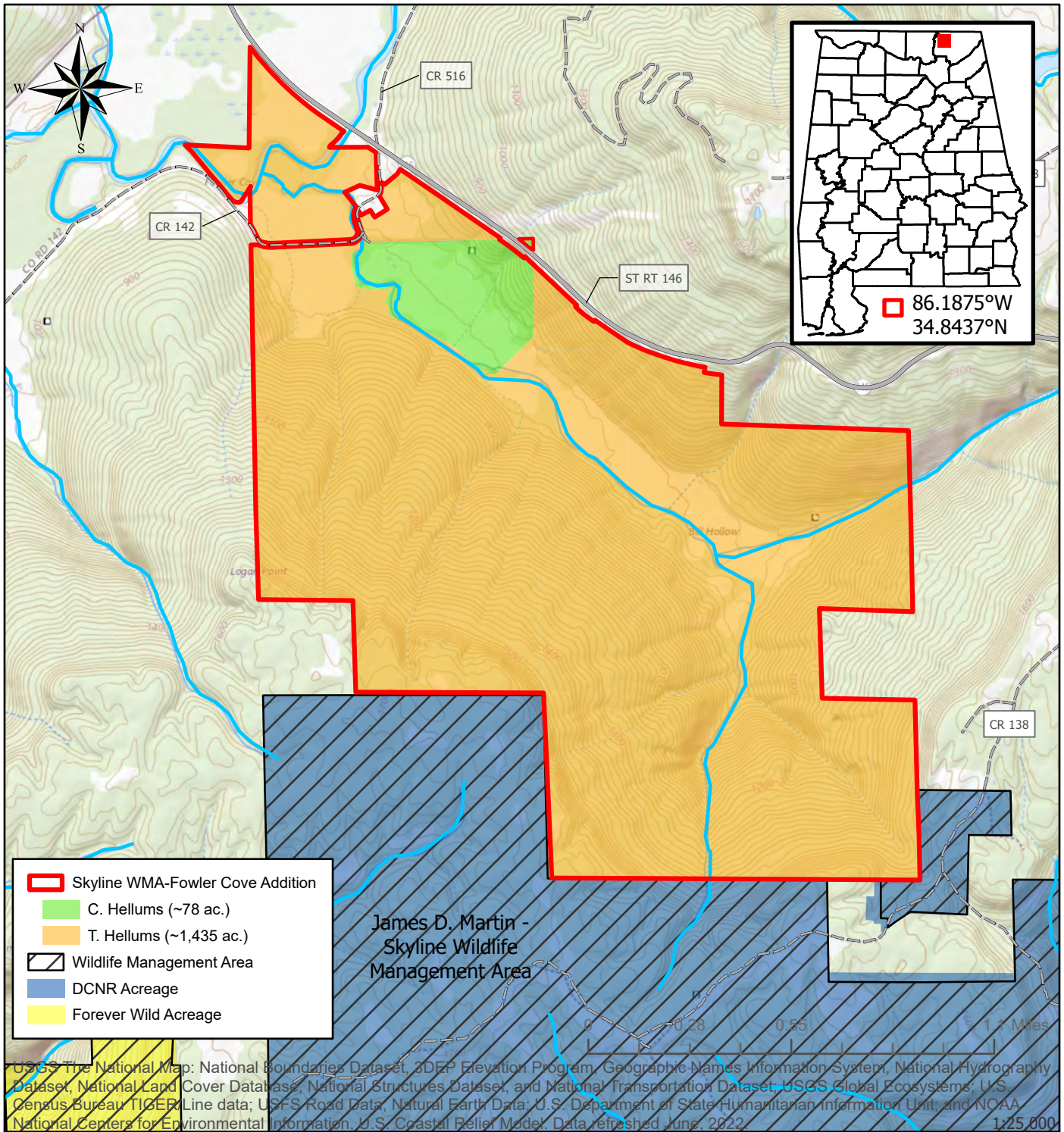
~1,212 acres

Tuscaloosa County T19S R12W
Brownville USGS Quadrangle



This map is for general overview information purposes only and, accordingly, should not be utilized or otherwise relied upon for any purpose. The Alabama Department of Conservation and Natural Resources and its affiliates assume no responsibility for any inaccuracies as to boundary lines, parcel ownership or other information contained within or depicted on the map.

Jo.Lewis 10/18/2022



USGS The National Map: National Boundaries Dataset, 3DEP Elevation Program, Geographic Names Information System, National Hydrography Dataset, National Land Cover Database, National Structures Dataset, and National Transportation Dataset; USGS Global Ecosystems; U.S. Census Bureau TIGER Line data; USFS Road Data; Natural Earth Data; U.S. Department of State Humanitarian Information Unit; and NOAA National Centers for Environmental Information, U.S. Coastal Relief Model. Data refreshed June, 2022. 1:25,000

Alabama Department of Conservation and Natural Resources
Forever Wild Nomination
SKYLINE WMA-FOWLER COVE ADDITION

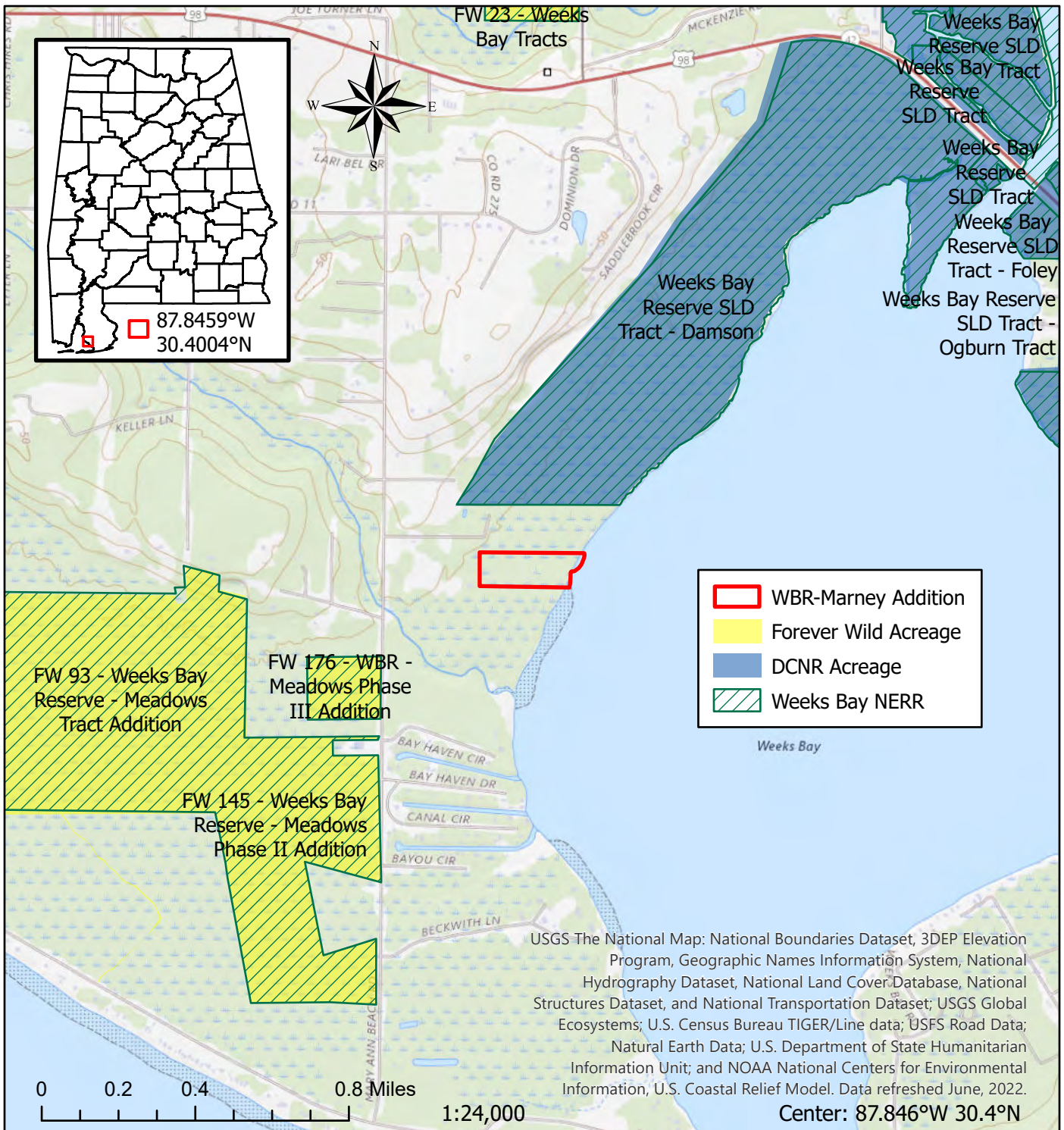
~1,513 acres

Jackson County T02S R04E
 Princeton USGS Quadrangle



This map is for general overview information purposes only and, accordingly, should not be utilized or otherwise relied upon for any purpose. The Alabama Department of Conservation and Natural Resources and its affiliates assume no responsibility for any inaccuracies as to boundary lines, parcel ownership or other information contained within or depicted on the map.

Michael.Rice@19/2022



Alabama Department of Conservation and Natural Resources
Forever Wild Nomination
WEEKS BAY RESERVE-MARNEY ADDITION

~14 acres

Baldwin County T07S R02E
 Magnolia Springs USGS Quadrangle



This map is for general overview information purposes only and, accordingly, should not be utilized or otherwise relied upon for any purpose.
 The Alabama Department of Conservation and Natural Resources and its affiliates assume no responsibility for any inaccuracies as to boundary lines, parcel ownership or other information contained within or depicted on the map.

10/14/2022
 Jo.Lewis