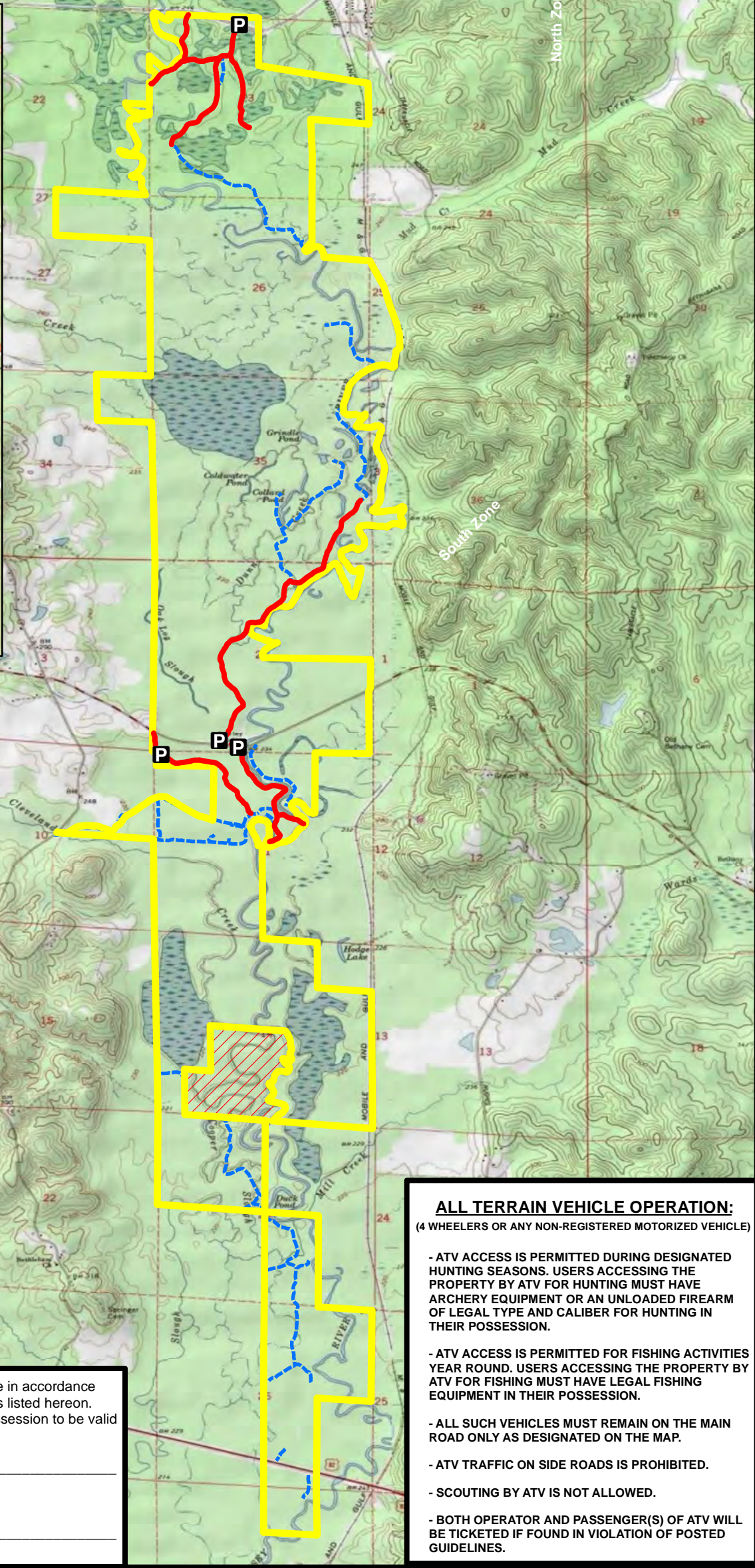


Sources: Esri, DeLorme, NAVTEQ, USGS, NRCAN, METI, iPC, TomTom



This map is your permit to hunt all game in accordance with the seasons, rules, and regulations listed hereon. This permit must be signed and in your possession to be valid

Signed \_\_\_\_\_

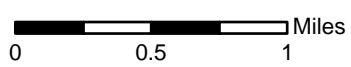
Dated \_\_\_\_\_

- ALL TERRAIN VEHICLE OPERATION:**  
(4 WHEELERS OR ANY NON-REGISTERED MOTORIZED VEHICLE)
- ATV ACCESS IS PERMITTED DURING DESIGNATED HUNTING SEASONS. USERS ACCESSING THE PROPERTY BY ATV FOR HUNTING MUST HAVE ARCHERY EQUIPMENT OR AN UNLOADED FIREARM OF LEGAL TYPE AND CALIBER FOR HUNTING IN THEIR POSSESSION.
  - ATV ACCESS IS PERMITTED FOR FISHING ACTIVITIES YEAR ROUND. USERS ACCESSING THE PROPERTY BY ATV FOR FISHING MUST HAVE LEGAL FISHING EQUIPMENT IN THEIR POSSESSION.
  - ALL SUCH VEHICLES MUST REMAIN ON THE MAIN ROAD ONLY AS DESIGNATED ON THE MAP.
  - ATV TRAFFIC ON SIDE ROADS IS PROHIBITED.
  - SCOUTING BY ATV IS NOT ALLOWED.
  - BOTH OPERATOR AND PASSENGER(S) OF ATV WILL BE TICKETED IF FOUND IN VIOLATION OF POSTED GUIDELINES.



**Forever Wild Land Trust**  
**Sipse River Complex - North Zone**  
 Nature Preserve and Recreational Area  
 3,767 Acres

- Parking Access
- Main Roads
- Side Roads
- Boundary
- Out Parcel





**Alabama Forever Wild Land Trust**  
**SIPSEY RIVER COMPLEX – “NORTH ZONE”**  
**(Tuscaloosa County)**  
**Hunting Regulations – September 2022 - August 2023**

**PERMITS:** Permits can be found online at [www.alabamaforeverwild.com](http://www.alabamaforeverwild.com) or kiosk located on the tract. Permits requested by mail should be made to Conservation Enforcement Officer David Hopper, 64 N. Union St., Suite 464, Montgomery, AL 36130. (Telephone [205] 288-5978) Request must include current hunting license number and large self-addressed, stamped envelope. Roads may be closed seasonally for repairs and maintenance.

**NOTE:**

- A State Hunting License and a Permit Map are required when hunting deer, turkey, or waterfowl when hunting the Sipsey River Complex. For residents, a state hunting license or Wildlife Heritage License (residents only) and Permit Map are required for hunting small game, except waterfowl at the Sipsey River Complex. Nonresidents must possess a State Hunting License and Permit Map to hunt big game and small game.
- Statewide antlered buck season bag limit applies to all Alabama Forever Wild Land Trust Tracts with hunting provisions.

**220-2-.125 Special Hunting Seasons for Certain Forever Wild and State Lands Division Lands**

(1) The following special hunting seasons, in accordance with the below-stated times, places, manners, and means, are hereby established for the following Forever Wild and State Lands Division lands:

(a) The hunting seasons as established in Rule 220-2-.01, 220-2-.77, and 220-2-.29, as they apply to said lands and to "Open Permit-Public Land" in the particular portions of the counties in which the tracts are located, shall apply except as otherwise provided herein:

1. Hunting of waterfowl shall be restricted to thirty (30) minutes prior to sunrise until 12 noon during the state waterfowl seasons.
2. Hunting of feral swine (wild hogs) shall be limited to **October 1 through May 31** for Sipsey River Complex in Tuscaloosa County, (no bag limit).

(b) Deer hunting shall be limited to shotgun with slugs, muzzle-loading rifles, muzzle-loading handguns, muzzle-loading shotguns, pre-charged pneumatic arrow shooting rifles using arrow equipped with a broadhead which has a minimum cutting diameter of 7/8" and 2 sharpened edges, pre-charged pneumatic air powered guns. 30 caliber or larger, bow and arrow, or crossbow. Rifles and handguns to be .40 caliber or larger, shotguns to use single round balls only. Firearms must be incapable of holding more than one charge for each barrel.

4. No centerfire rifles or buckshot shall be allowed for any type of hunting.
5. No dogs shall be permitted for hunting deer, coyote, and feral swine (wild hogs).
6. Special muzzleloader season for Deer: By muzzleloader only – Stalk hunting only (no dogs). During the special muzzleloader deer season, two (2) deer per day only one (1) of which may be an antlered buck and only one (1) may be an unantlered deer (except spotted fawns), permitted **November 14 to November 18**.
7. Turkey hunting shall be legal from daylight until 1:00 pm.

(c) **4-15 Regulation of Certain Conduct On Lands Under State Lands Division Jurisdiction**

(1) Except as otherwise authorized in writing by the Director of the State Lands Division, **IT SHALL BE UNLAWFUL** on any state-owned lands under the jurisdiction of the State Lands Division:

- a) To hunt, trap, use dogs, possess firearms, traps, or bow and arrow, without a proper license. See (1)(r) for limited exception for certain lawfully authorized handguns possessed for personal protection.
- b) For any person to carry in or on a vehicle, any of the following: any firearms [including pistols/handguns, except as described in (1)(r)] with ammunition in the magazine, breech or clip attached to firearms, or black powder weapons with primer, cap or flash powder in place or cocked crossbows. See (1)(r) for limited exception for certain lawfully authorized handguns possessed for personal protection.
- c) To camp except in designated areas. Campers using generators must camp in an area designated for generator use. Individuals or groups may camp for a period not to exceed nine (9) days in any thirty (30) day period. Campfires must be extinguished before departing. No warming fires shall be permitted away from camping area.
- d) To kill, collect or willfully molest any species of wildlife except those designated for hunting.
- e) To discharge fireworks at any time.
- f) To discharge firearms or archery equipment for target practice.
- g) To hunt or discharge firearms or shoot a bow and arrow or crossbow within 150 yards of any designated camping area, dwelling, dam or timber operation, 100 yards of any paved or unpaved public road or highway, or within a posted safety zone or on Sunday within one-half mile of any church.
- h) For any person except authorized personnel to operate any motor driven vehicle behind, under or around any locked gate, barricaded road or sign which prohibits vehicular traffic.
- i) For any unauthorized person at any time to operate a motor scooter, ATV, motorcycle, motorized trail bike, or any motor driven vehicle except on regularly used roads open for public use by four wheel vehicle traffic; or for any unauthorized person to ride or possess horses except: (1) on roads open to four-wheel motorized vehicles; and (2) in areas, roads, and trails, designated as open to horses.
- j) For any person except authorized personnel to block or otherwise stop traffic on any road or at any gate by any means including by parking a vehicle in such a way that passage around the vehicle is impossible.
- k) For any person to deposit, distribute or scatter grain, salt, litter, or any other materials.
- l) To damage or remove any trees, embedded submerged logs, crops, plants or other vegetation, minerals, precious metals, dirt, gravel, stones, artifacts, fossils, firewood, mulch, leaf litter, sod or pine straw.
- m) To erect or use a permanent tree stand or scaffold.
- n) To cast a light of any kind, either hand held, affixed to a vehicle, or otherwise, between the hours of sunset and sunrise except in areas where the state law is more restrictive. This paragraph does not apply to the headlights of vehicles traveling in a normal manner on an open established road.
- o) To hunt from an elevated stand or platform without attaching themselves to the tree or platform with a full-body safety harness, capable of supporting their weight.
- p) To violate any posted restrictions on entry, hunting, fishing, or other conduct.
- q) To release any animal, bird, fish, other wildlife, or introduce any plant or other vegetative material.
- r) Nothing in this regulation prohibits the possession of handguns by lawfully authorized persons for personal protection provided the handguns are not used to hunt or take or to attempt to take wildlife in violation of law.
- s) To possess any open alcoholic beverages outside a designated camping area, a lodging accommodation, a dining facility, or other special event areas as may be designated by the commissioner or his designee.
- t) For any unauthorized person, at any time, to operate a motor scooter, ATV, UTV, motorcycle, motorized trail bike, or any motor driven vehicle (NOT to include vessels) on state-owned submerged lands.

**FOR INFORMATION ABOUT THIS NATURE PRESERVE AND RECREATION AREA OR THE FOREVER WILD PROGRAM, CALL THE STATE LANDS DIVISION AT 1-800-LAND-ALA OR VISIT [WWW.ALABAMAFOREVERWILD.COM](http://WWW.ALABAMAFOREVERWILD.COM)**