

# Wehle Land Conservation Center

A Facility of the Alabama Department of Conservation and Natural Resources State Lands Division

- Bottomland Cut-off Trail (1.0 mi.)
- Firebreak Trail (3.6 mi.)
- Pines Trail (5.7 mi.)
- Day Use Hiking Trail
- Gravel Road
- Creek
- Pleasant Hill Rd.
- Powerline
- Wehle FW Boundary
- Barbour WMA

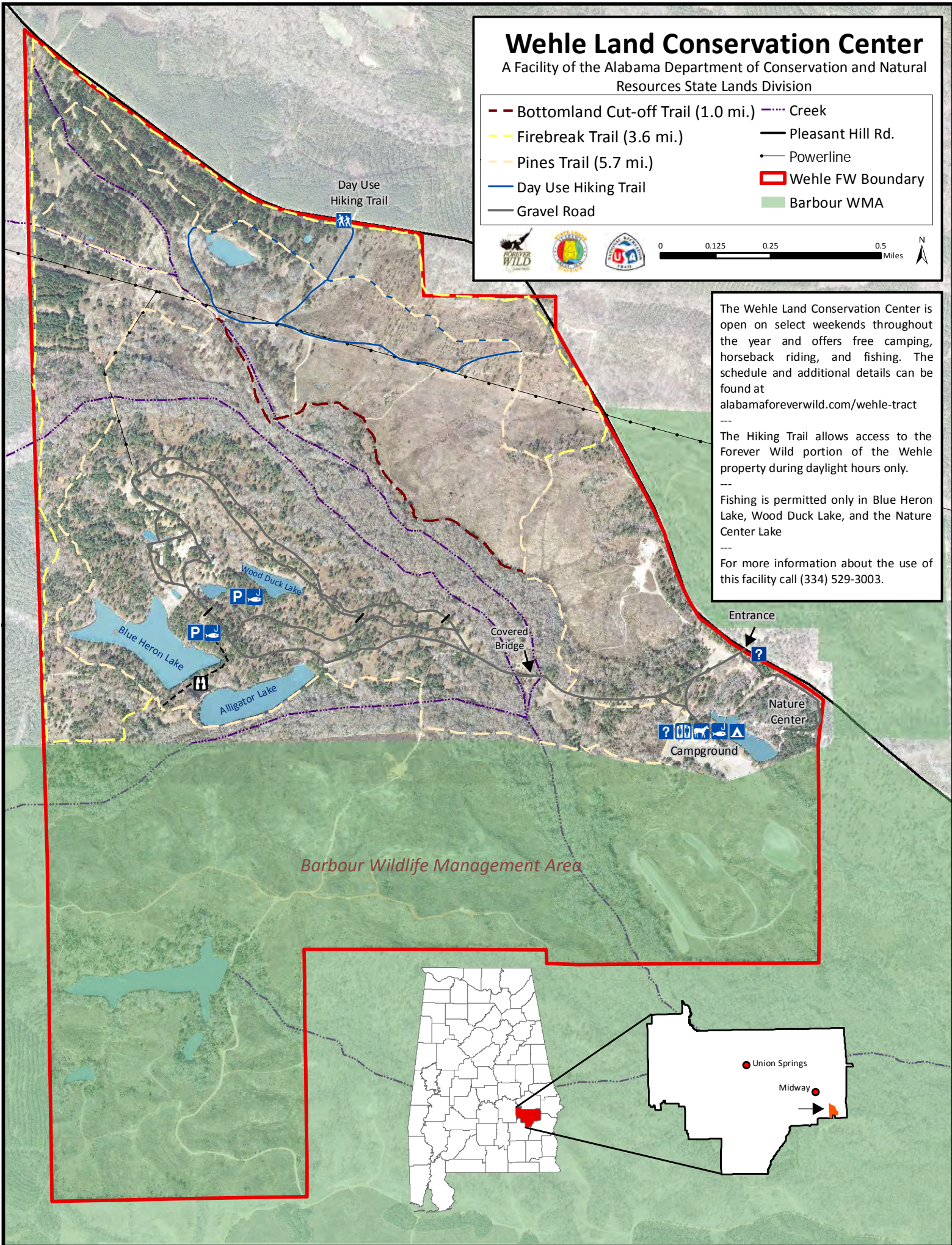


The Wehle Land Conservation Center is open on select weekends throughout the year and offers free camping, horseback riding, and fishing. The schedule and additional details can be found at [alabamaforeverwild.com/wehle-trail](http://alabamaforeverwild.com/wehle-trail)

---  
The Hiking Trail allows access to the Forever Wild portion of the Wehle property during daylight hours.

---  
Fishing is permitted only in Blue Heron Lake, Wood Duck Lake, and the Nature Center Lake

---  
For more information about the use of this facility call (334) 529-3003.



*Barbour Wildlife Management Area*

