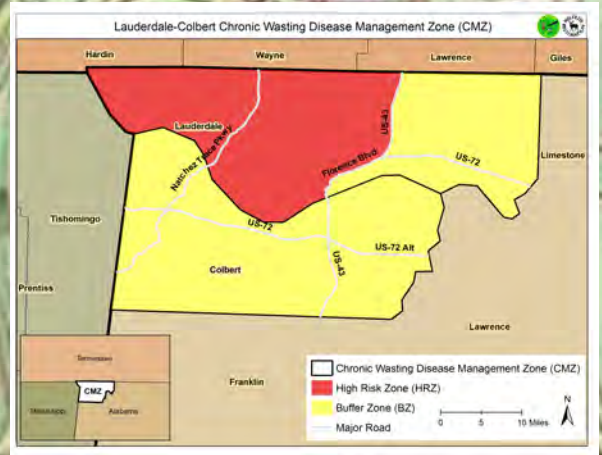


This map is your permit to hunt all game in accordance with the seasons, rules, and regulations listed hereon. This permit must be signed and in your possession to be valid.

Signed \_\_\_\_\_

Dated \_\_\_\_\_



Lawson Branch Loop 1.8 Miles

Horse Trail Loop 2.1 Miles

Kiosk

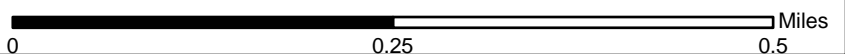
Jones Branch Loop 2.5 Miles

Copyright © 2013 National Geographic Society, i-cubed



**Forever Wild**  
**Shoal Creek Preserve Tract**  
Nature Preserve and Recreational Area  
298 Acres

- Hiking Trails
- Horse Trails
- Boundary Line



**Alabama Forever Wild Land Trust**  
**SHOAL CREEK PRESERVE TRACT**  
**(Lauderdale County)**  
**Hunting Regulations – September 2025 - August 2026**

**PERMITS:** Permits can be found online at [www.alabamaforeverwild.com](http://www.alabamaforeverwild.com) or kiosk located on the tract. Permits requested by mail should be made to Land Stewardship Officer Brandon Hunnicutt, 1136 Lasone Dr., Scottsboro, AL 35768. (Telephone [256]947-8387) Request must include current hunting license number and large self-addressed, stamped envelope. Roads may be closed seasonally for repairs and maintenance.

**NOTE:**

- A State Hunting License and a Permit Map are required when hunting deer, turkey, or waterfowl when hunting the Shoal Creek Preserve Tract. For residents, a state hunting license or Wildlife Heritage License (residents only) and Permit Map are required for hunting small game, except waterfowl at the Shoal Creek Preserve Tract. Nonresidents must possess a State Hunting License and Permit Map to hunt big game and small game.
- Statewide antlered buck season bag limit applies to all Alabama Forever Wild Land Trust Tracts with hunting provisions.

**220-2-.125 Special Hunting Seasons for Certain Forever Wild and State Lands Division Lands**

(1) The following special hunting seasons, in accordance with the below-stated times, places, manners, and means, are hereby established for the following Forever Wild and State Lands Division lands:

(a) The hunting seasons as established in Rule 220-2-.01 and 220-2-.77 as they apply to said lands and to "Open Permit-Public Land" in the particular portions of the counties in which the tracts are located, shall apply except as otherwise provided herein:

1. Feral Swine - No closed season, no bag limit (no dog hunting allowed). Legal weapons limited to those allowed during otherwise listed open season on area. Outside of any listed open season on area, legal weapons shall follow 220-2-.02(6).
2. Deer hunting shall be limited to bow and arrow or crossbow.
3. No firearms permitted except for shotguns, 10 gauges or smaller using standard No. 2 shot or smaller. (Note: This prohibition shall not apply to the possession of handguns by lawfully authorized persons for their personal protection, provided the handguns are not used to hunt or take or attempt to take wildlife except as otherwise provided by this regulation.)
4. No dogs shall be permitted for hunting deer, coyote, and feral swine (wild hogs).
5. Trapping is allowed in accordance with State season and regulations.
6. It shall be illegal for any unauthorized person to possess or use any game camera/device capable of monitoring remotely and/or capable of automatically transmitting photos and/videos from March 1-May 31 without first obtaining written permission from the Alabama State Lands Division.
7. It shall be illegal for any unauthorized person to launch, land, possess, or use any unmanned aerial vehicle (UAV)/drone without first obtaining written permission from the Alabama State Lands Division.

(b) **4-15 Regulation of Certain Conduct On Lands Under State Lands Division Jurisdiction**

(1) Except as otherwise authorized in writing by the Director of the State Lands Division, **IT SHALL BE UNLAWFUL** on any state- owned lands under the jurisdiction of the State Lands Division:

- a) To hunt, trap, use dogs, possess firearms, traps, or bow and arrow, without a proper license. See (1)(r) for limited exception for certain lawfully authorized handguns possessed for personal protection.
- b) For any person to carry in or on a vehicle, any of the following: any firearms [including pistols/handguns, except as described in (1)(r)] with ammunition in the magazine, breech or clip attached to firearms, or black powder weapons with primer, cap or flash powder in place or cocked crossbows. See (1)(r) for limited exception for certain lawfully authorized handguns possessed for personal protection.
- c) To camp except in designated areas. Campers using generators must camp in an area designated for generator use. Individuals or groups may camp for a period not to exceed nine (9) days in any thirty (30) day period. Campfires must be extinguished before departing. No warming fires shall be permitted away from camping area.
- d) To kill, collect or willfully molest any species of wildlife except those designated for hunting.
- e) To discharge fireworks at any time.
- f) To discharge firearms or archery equipment for target practice.
- g) To hunt or discharge firearms or shoot a bow and arrow or crossbow within 150 yards of any designated camping area, dwelling, dam or timber operation, 100 yards of any paved or unpaved public road or highway, or within a posted safety zone or on Sunday within one-half mile of any church.
- h) For any person except authorized personnel to operate any motor driven vehicle behind, under or around any locked gate, barricaded road or sign which prohibits vehicular traffic.
- i) For any unauthorized person at any time to operate a motor scooter, ATV, motorcycle, motorized trail bike, or any motor driven vehicle except on regularly used roads or trails designated as allowing public use of specific motor driven vehicles; or for any unauthorized person to ride or possess horses except: (1) on roads open to four-wheel motorized vehicles; and (2) in areas, roads, and trails, designated as open to horses.
- j) For any person except authorized personnel to block or otherwise stop traffic on any road or at any gate by any means including by parking a vehicle in such a way that passage around the vehicle is impossible.
- k) For any person to deposit, distribute or scatter grain, salt, litter, or any other materials.
- l) To damage or remove any trees, embedded submerged logs, crops, plants or other vegetation, minerals, precious metals, dirt, gravel, stones, artifacts, fossils, firewood, mulch, leaf litter, sod or pine straw.
- m) To erect or use a permanent tree stand or scaffold.
- n) To cast a light of any kind, either hand held, affixed to a vehicle, or otherwise, between the hours of sunset and sunrise except in areas where the state law is more restrictive. This paragraph does not apply to the headlights of vehicles traveling in a normal manner on an open established road.
- o) To hunt from an elevated stand or platform without attaching themselves to the tree or platform with a full-body safety harness, capable of supporting their weight.
- p) To violate any posted restrictions on entry, hunting, fishing, or other conduct.
- q) To release any animal, bird, fish, other wildlife, or introduce any plant or other vegetative material.
- r) Nothing in this regulation prohibits the possession of handguns by lawfully authorized persons for personal protection provided the handguns are not used to hunt or take or to attempt to take wildlife in violation of law.
- s) To possess any open alcoholic beverages outside a designated camping area, a lodging accommodation, a dining facility, or other special event areas as may be designated by the commissioner or his designee.
- t) For any unauthorized person, at any time, to operate a motor scooter, ATV, UTV, motorcycle, motorized trail bike, or any motor driven vehicle (NOT to include vessels) on state-owned submerged lands.
- u) For any unauthorized person to launch, land, possess, or use any unmanned aerial vehicle (UAV)/drone without first obtaining written permission from the Alabama State Lands Division.

**FOR INFORMATION ON HUNTING REGULATIONS CONTACT**  
**LAND STEWARDSHIP OFFICER BRANDON HUNNICUTT AT (256)947-8387**  
**FOR INFORMATION ABOUT THIS NATURE PRESERVE AND RECREATION AREA OR THE FOREVER WILD PROGRAM,**  
**CALL THE STATE LANDS DIVISION AT 1-800-LAND-ALA OR VISIT [WWW.ALABAMAFOREVERWILD.COM](http://WWW.ALABAMAFOREVERWILD.COM)**